



# Virtual Public Open House

## AMATS: Chugach Foothills Connector, Phase II

February 4, 2021  
@ 7:00 PM via ZOOM

# Project Team



Municipality of Anchorage Parks & Recreation

- ▣ Taylor Keegan, Project Manager



DOT&PF

- ▣ Kevin Jackson, P.E., Project Manager



R&M Consultants, Inc.

- ▣ Marc Frutiger, P.E., PTOE, Project Manager
- ▣ Van Le, AICP, Planning & Public Involvement Lead





# Project Overview

- ◆ MOA Parks & Rec developing 2<sup>nd</sup> phase of Chugach Foothills Connector
- ◆ Separated, multi-use pathway for non-motorized users
- ◆ Regal Mountain Drive to Campbell Airstrip Road
- ◆ Funding from FHWA through AMATS
- ◆ Project will go through both NEPA & MOA Trails Review
- ◆ Pathway will include a spur to Benny Benson Secondary School







# Scope of Work

- ◆ Vegetation clearing & grubbing
- ◆ Construction of a multi-use, gravel-surface pathway
- ◆ Installation of a short section of boardwalk and other amenities
- ◆ Drainage improvements





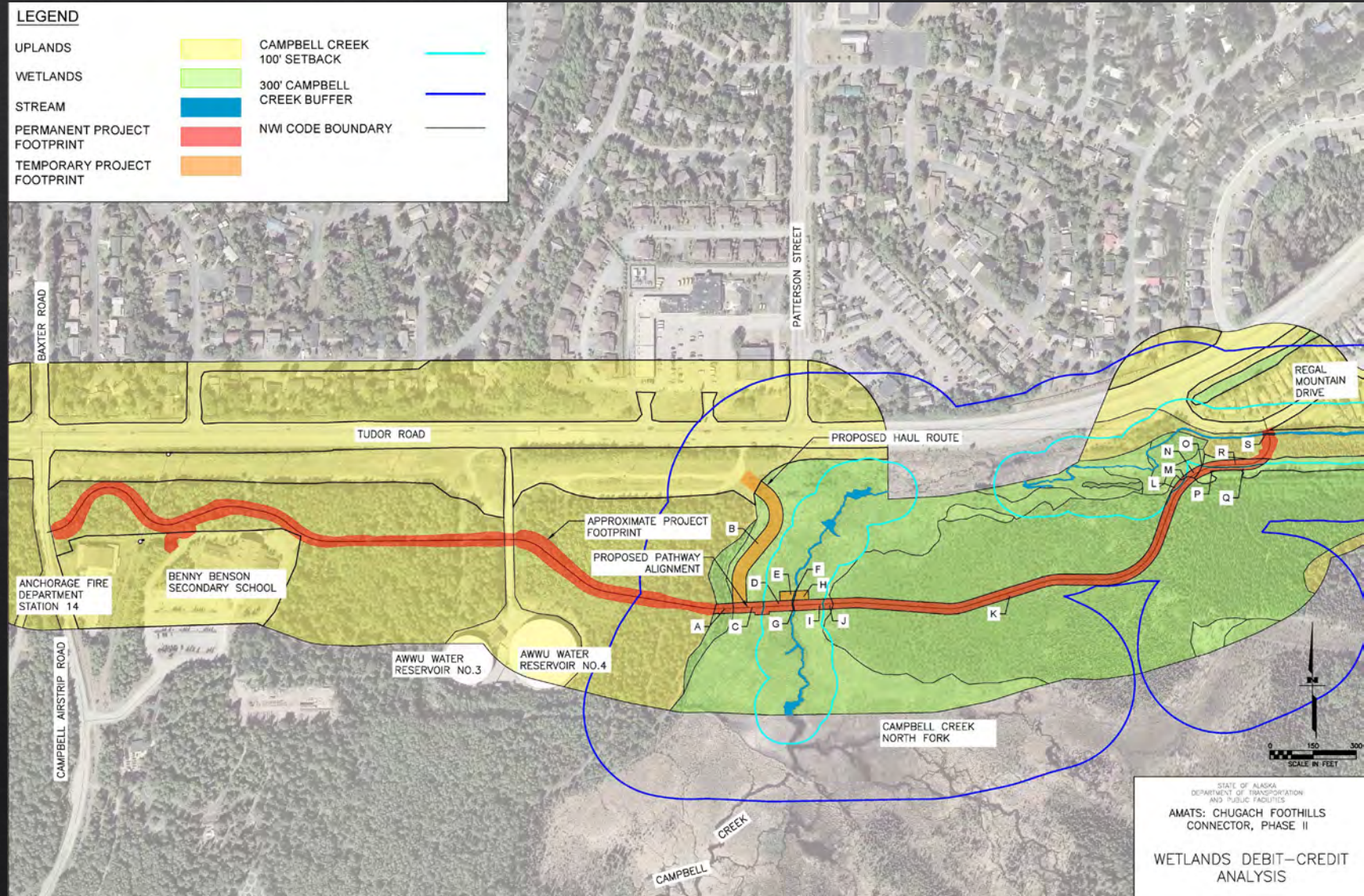
# Work Completed

<b>April 4, 2019</b>	Presentation at Scenic Foothills Community Council Meeting
<b>September 25, 2019</b>	ASD Meeting
<b>October 9, 2019</b>	ASD Meeting on Site at Benny Benson School
<b>January 22, 2020</b>	USACE pre-application meeting
<b>January 23, 2020</b>	Anchorage Transportation Fair
<b>November 18, 2020</b>	Anchorage Transportation Fair (Virtual)
<b>December 30, 2020</b>	MOA Trail Review pre-application meeting
<b>February 4, 2021</b>	Virtual Open House at Scenic Foothills Community Council



# Project Constraints

- ◆ Wetlands
- ◆ Drainage
- ◆ Soils
- ◆ Utilities
- ◆ Termini
- ◆ Accessibility
- ◆ Future development
- ◆ Existing trails
- ◆ Cost





**LEGEND**

- WETLANDS
- UPLANDS
- WETLANDS
- PATHWAY ALTERNATIVES

# Alternative Alignments

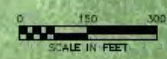
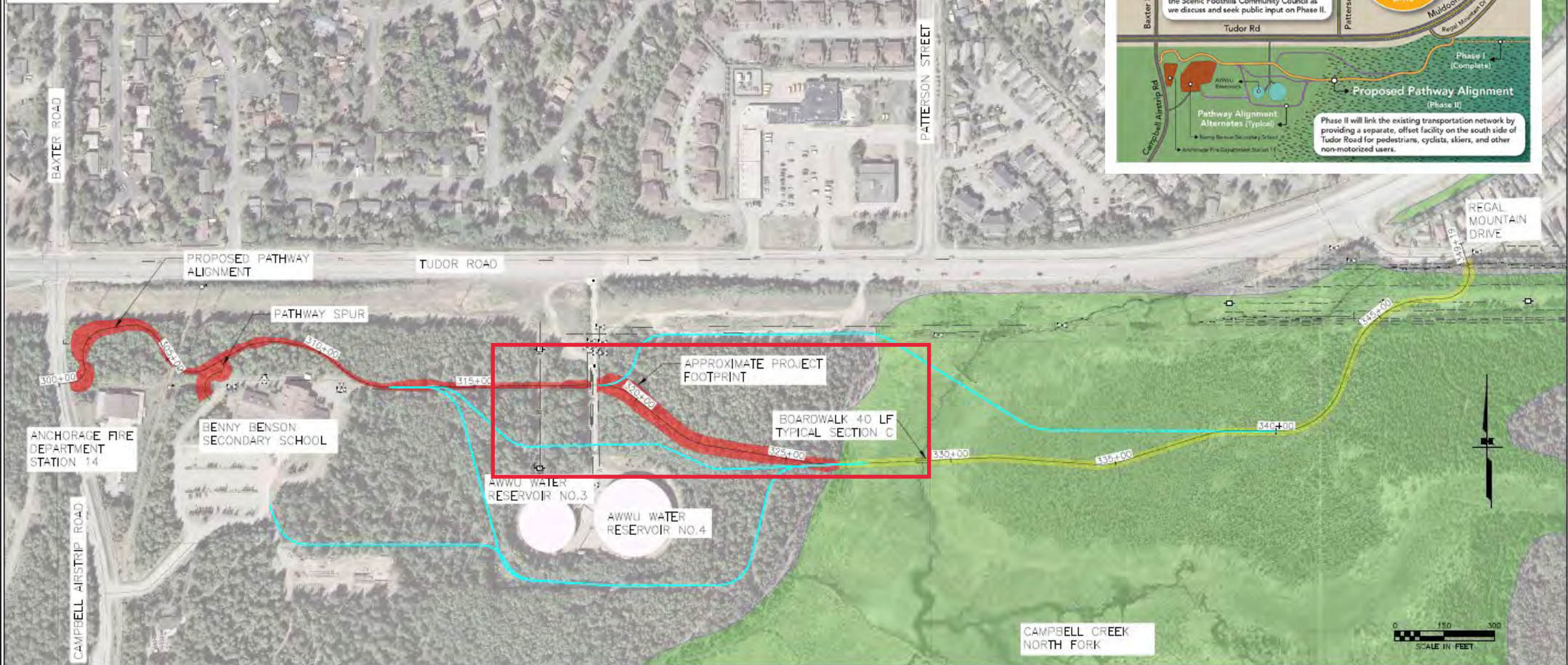
Anchorage Metropolitan Area Transportation Solutions  
CHUGACH FOOTHILLS NORTHEAST CONNECTOR

The Municipality of Anchorage Parks & Recreation Department and the Alaska Department of Transportation and Public Facilities developed a phased solution to establish an east-west multi-purpose pathway in the Far North Bicentennial Park.

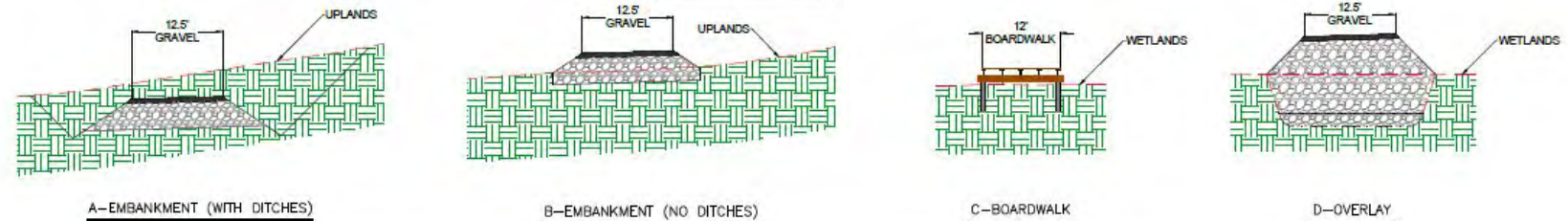
**JOIN US** for a virtual open house hosted by the Scenic Foothills Community Council as we discuss and seek public input on Phase II.

PHASE II  
Connecting  
Campbell  
Airstrip Road to  
Regal Mountain  
Drive

Phase II will link the existing transportation network by providing a separate, offset facility on the south side of Tudor Road for pedestrians, cyclists, skiers, and other non-motorized users.



**Typical Sections**



STATE OF ALASKA  
DEPARTMENT OF TRANSPORTATION  
AND PUBLIC FACILITIES  
AMATS: CHUGACH FOOTHILLS  
CONNECTOR, PHASE II

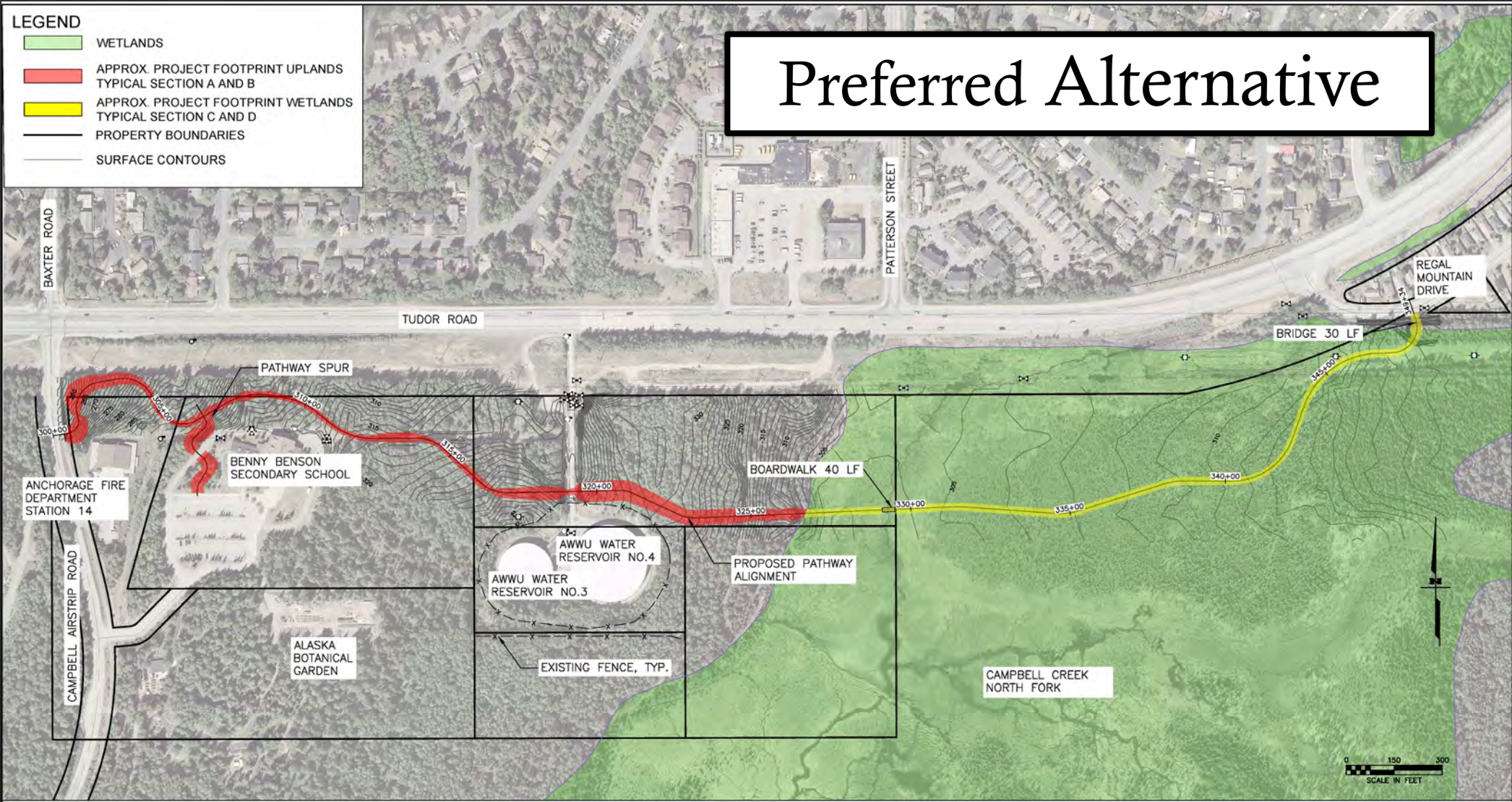
PROJECT OVERVIEW  
JANUARY 2021



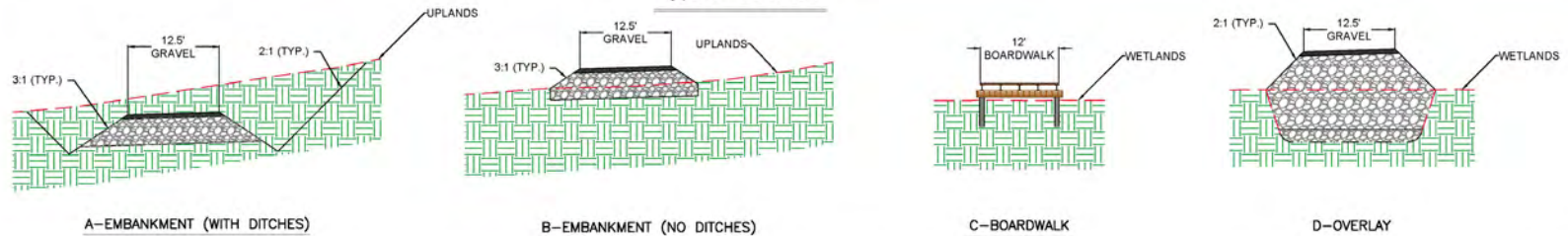
**LEGEND**

- WETLANDS
- APPROX. PROJECT FOOTPRINT UPLANDS  
TYPICAL SECTION A AND B
- APPROX. PROJECT FOOTPRINT WETLANDS  
TYPICAL SECTION C AND D
- PROPERTY BOUNDARIES
- SURFACE CONTOURS

# Preferred Alternative



**Typical Sections**



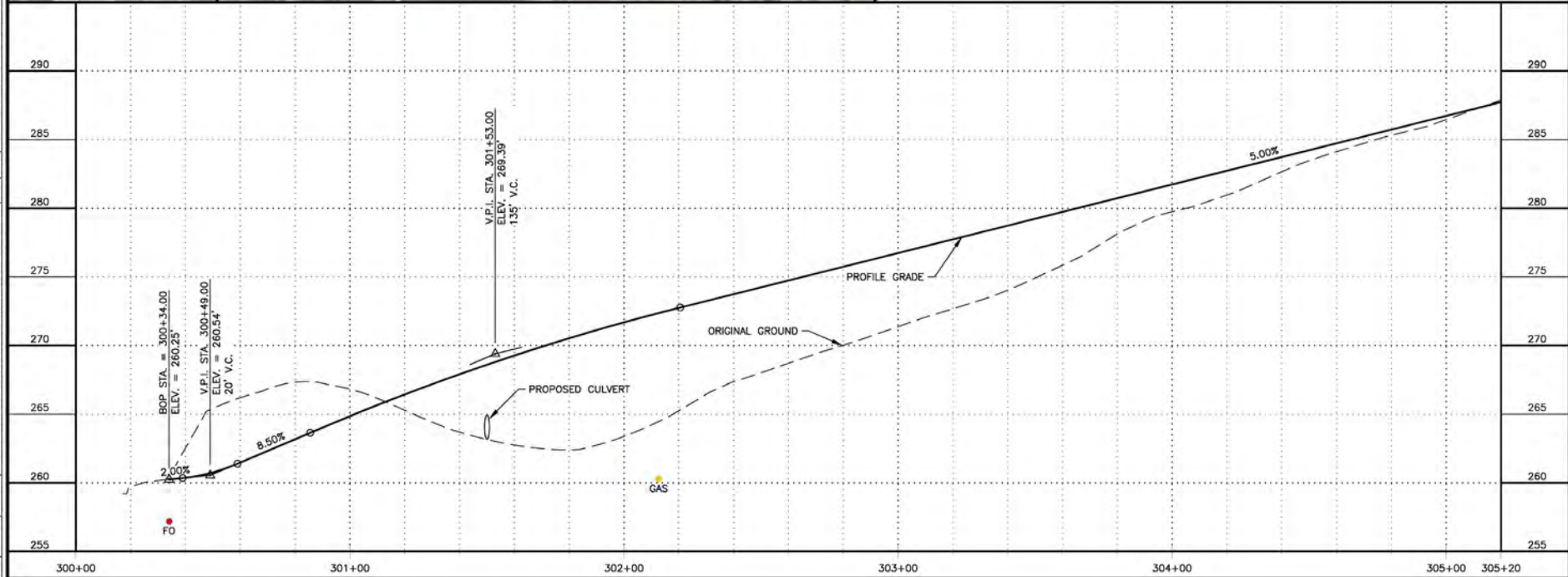
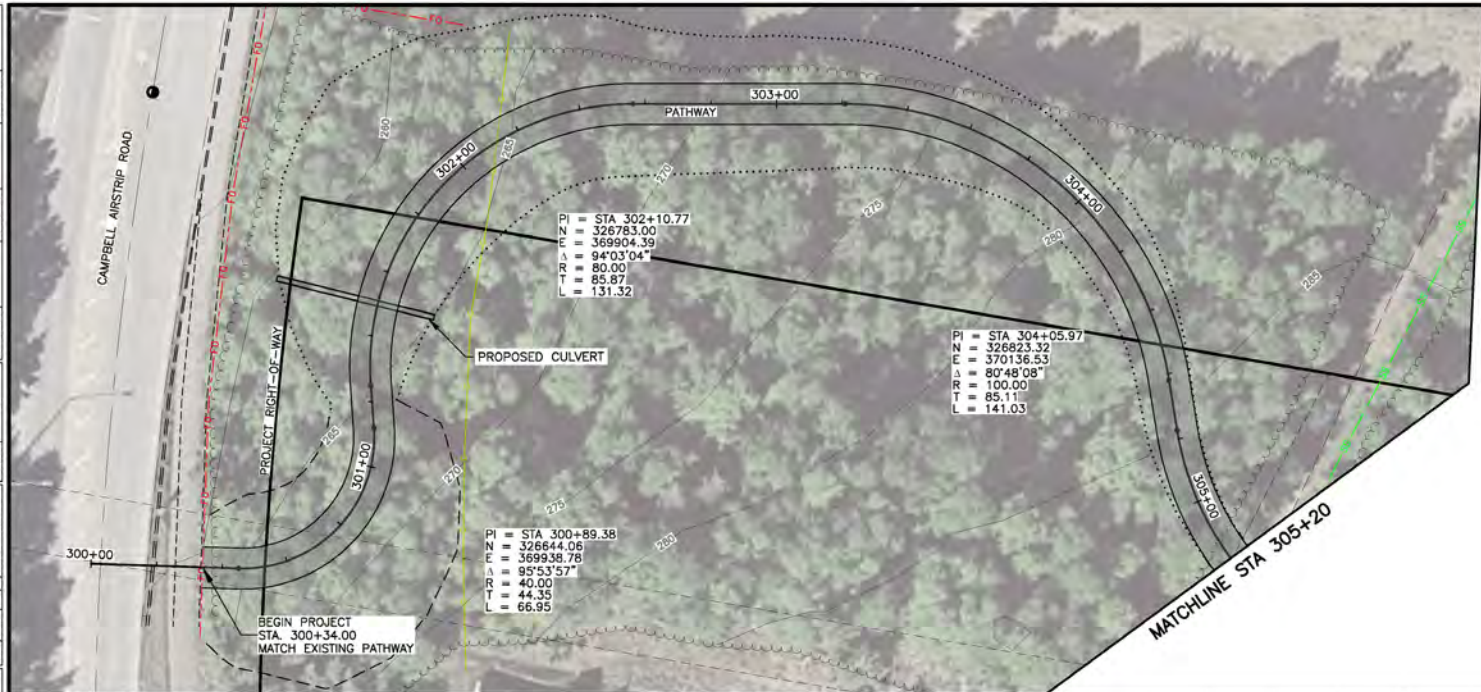
STATE OF ALASKA  
DEPARTMENT OF TRANSPORTATION  
AND PUBLIC FACILITIES  
**AMATS: CHUGACH FOOTHILLS  
CONNECTOR, PHASE II**

**OVERVIEW  
FEBRUARY 2021**

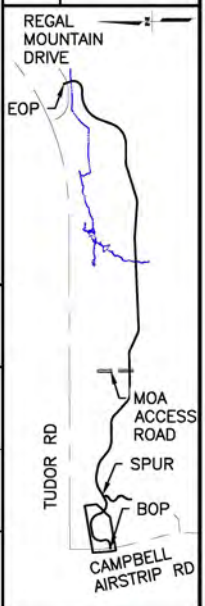


FILE Z:\PROJECT\2428.10 MOA PRD TERM CHUGACH FOOTHILLS NE CONNECTOR\DRAWING\2428.10\_P-PLAN & PROFILE.DWG

DATE/TIME 2/7/2021 1:01 PM LAYOUT F1 DESIGNED CHECKED DRAFTED



SHEET NO.	TOTAL SHEETS
F1	F11
STATE	YEAR
ALASKA	2021
PROJECT DESIGNATION	
TBD/CFHWY00387	
NO.	REVISION
DATE	
NO.	REVISION
DATE	
NO.	REVISION
DATE	

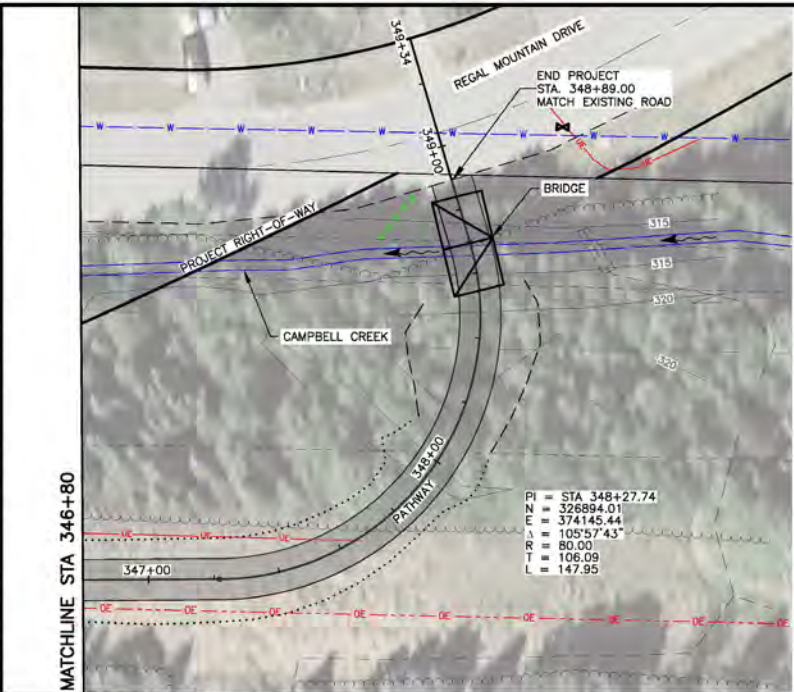


  
 RAM CONSULTANTS, INC.  
 9101 VANGUARD DRIVE  
 ANCHORAGE, AK 99507  
 (907) 522-1707  
 CERT. OF AUTH. NO. AECC111

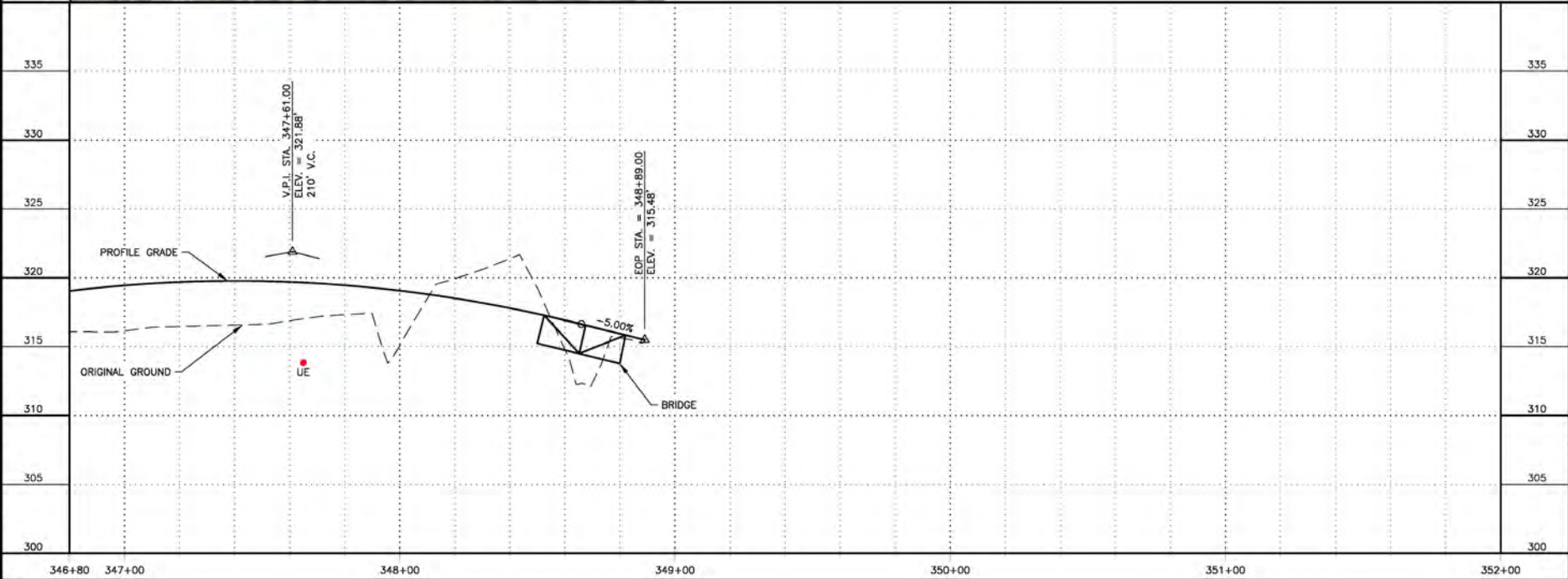
STATE OF ALASKA  
 DEPARTMENT OF TRANSPORTATION  
 AND PUBLIC FACILITIES  
 AMATS: CHUGACH  
 FOOTHILLS CONNECTOR,  
 PHASE II  
 PLAN & PROFILE  
 BOP TO STA  
 305+20



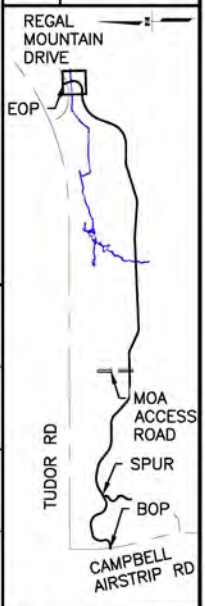
FILE Z:\PROJECT\2428.10 MOA PRD TRM CHUGACH FOOTHILLS NE CONNECTOR\DWG\2428.10\_P-PLAN & PROFILE.DWG DATE/TIME 2/7/2021 1:02 PM LAYOUT F10 DESIGNED CHECKED DRAFTED



PI = STA 348+27.74  
 N = 326894.01  
 E = 374145.44  
 A = 105°57'43"  
 R = 80.00  
 T = 106.09  
 L = 147.95



SHEET NO.	TOTAL SHEETS
F10	F11
STATE	YEAR
ALASKA	2021
PROJECT DESIGNATION	
TBD/CFHWY00387	
NO.	REVISION
DATE	
NO.	REVISION
DATE	
NO.	REVISION
DATE	



RAM CONSULTANTS, INC.  
 9101 VANGUARD DRIVE  
 ANCHORAGE, AK 99507  
 (907) 522-1707  
 CERT. OF AUTH. NO. AECC111

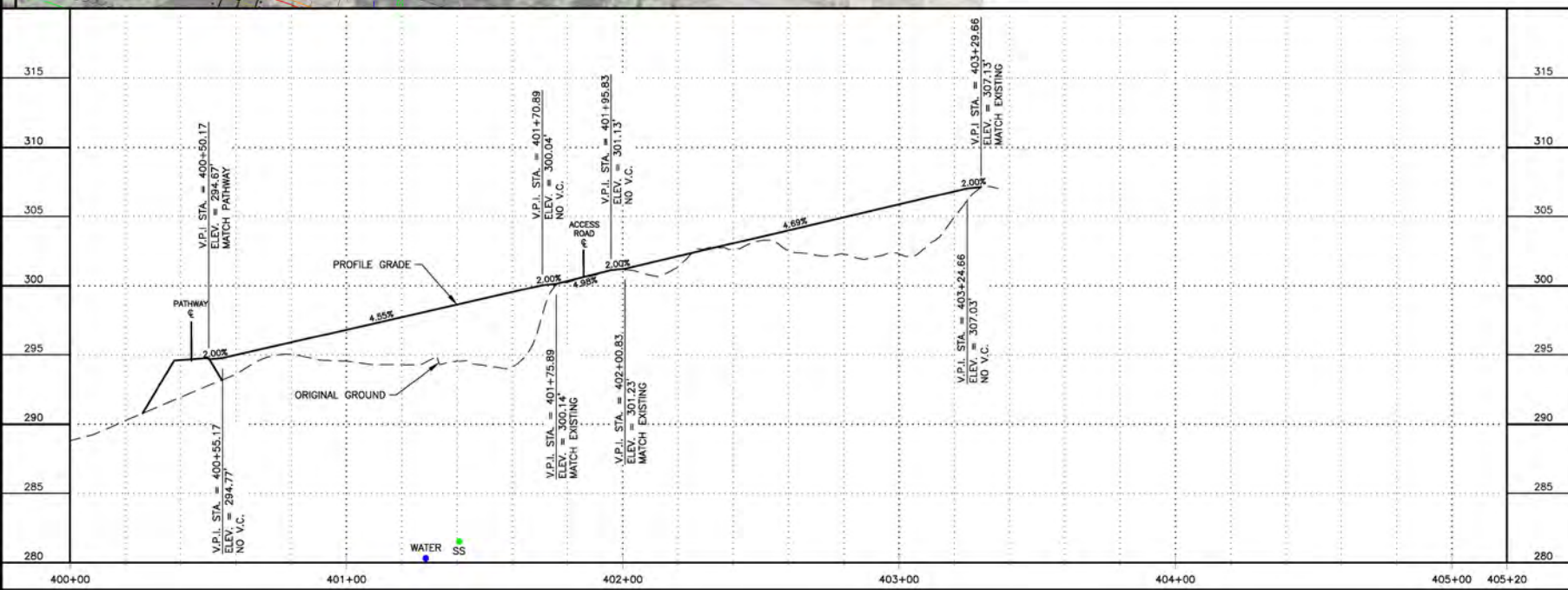
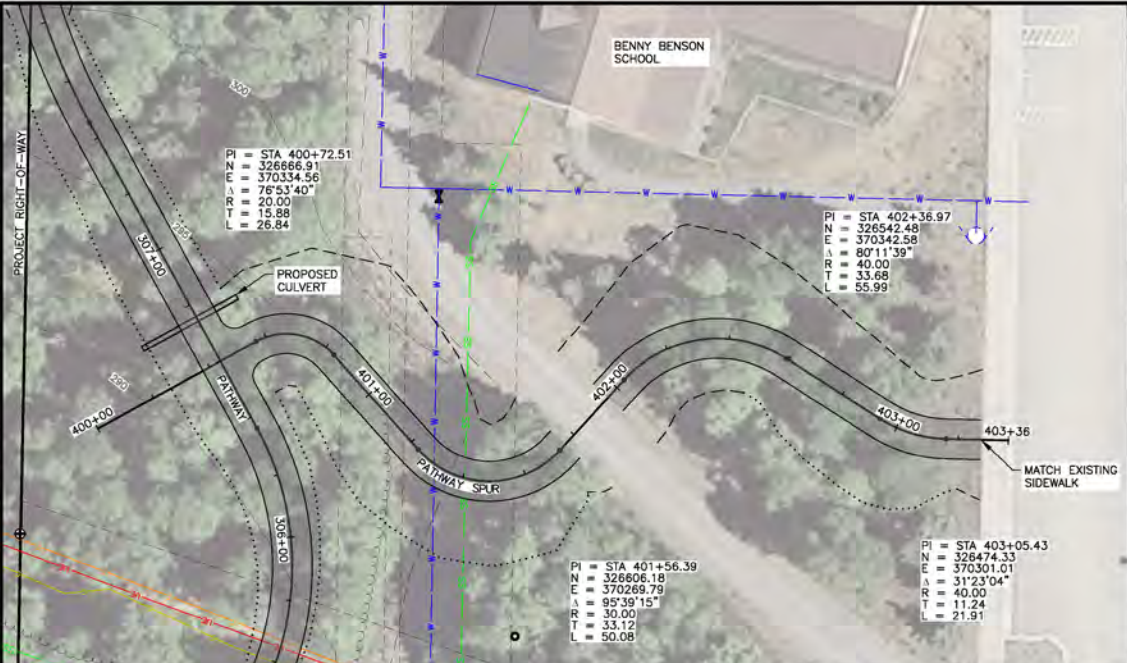
STATE OF ALASKA  
 DEPARTMENT OF TRANSPORTATION  
 AND PUBLIC FACILITIES

AMATS: CHUGACH  
 FOOTHILLS CONNECTOR,  
 PHASE II

PLAN & PROFILE  
 STA 346+80 TO  
 EOP



FILE: Z:\PROJECT\2625.10 MOA PHD TERM CHUGACH FOOTHILLS NE CONNECTOR\CON\2625.10.F-PLAN & PROFILE.DWG DATE/TIME: 2/2/2021 1:52 PM LAYOUT: F11 DESIGNED: [ ] CHECKED: [ ] DRAFTED: [ ]



SHEET NO.	TOTAL SHEETS
F11	F11
STATE	YEAR
ALASKA	2021
PROJECT DESIGNATION	
TBD/CFHWY00387	

NO.	REVISION



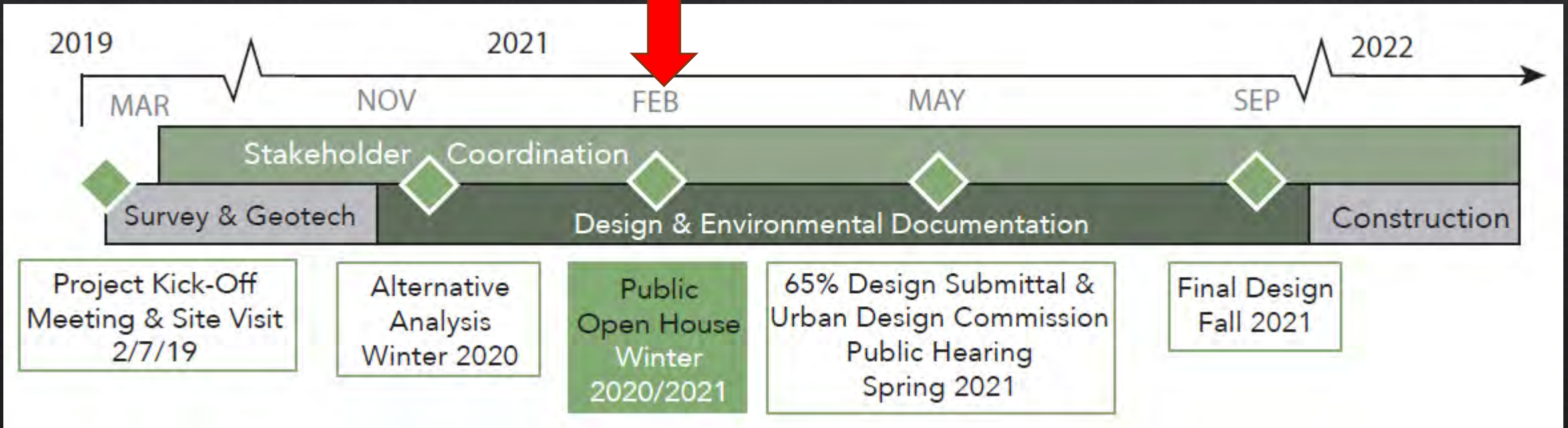
STATE OF ALASKA  
 PROFESSIONAL ENGINEER  
 P.H. FEB 2021  
 RAW CONSULTANTS, INC.  
 9101 VANGUARD DRIVE  
 ANCHORAGE, AK 99507  
 (907) 522-1707  
 CERT. OF AUTH. NO. ACC2111

STATE OF ALASKA  
 DEPARTMENT OF TRANSPORTATION  
 AND PUBLIC FACILITIES  
 AMATS: CHUGACH  
 FOOTHILLS CONNECTOR,  
 PHASE II  
 PLAN & PROFILE  
 PATHWAY SPUR



# Milestones

WE ARE HERE





Questions?  
Comments?



# Contact

Taylor Keegan

Project Manager

MOA Parks & Recreation

[taylor.keegan@anchorageak.gov](mailto:taylor.keegan@anchorageak.gov)

Van Le, AICP

Planning & Public Involvement Lead

R&M Consultants, Inc.

[vle@rmconsult.com](mailto:vle@rmconsult.com)

