



# Alaska State Legislature

Representative Matt Claman

## October Community Council Update

1. Special Session
  - a. Governor Walker called the Legislature into a special session beginning October 24<sup>th</sup> in Juneau.
  - b. The session will address a natural gas reserves tax and appropriating funds to buy out TransCanada as a partial owner in the AK LNG pipeline project.
  - c. Currently, the Legislature is waiting for a bill from the Governor to address the natural gas reserves tax.
2. Judiciary Committee
  - a. The Judiciary Committee met last week to work on a bill that addresses the state code of military justice. This bill is in response to sexual misconduct investigations within the Alaska National Guard last year.
3. Medicaid Lawsuit
  - a. The Legislative Ethics Committee has met recently and decided to continue pursuing a lawsuit, which will cost the state up to \$450,000, against Governor Walker and his decision to expand Medicaid.

716 W 4<sup>th</sup> Ave., Anchorage, AK 99501  
Phone: (907) 269-0130 Email: [Representative.Matt.Claman@akleg.gov](mailto:Representative.Matt.Claman@akleg.gov)

*Serving the Sand Lake, Spenard, and Turnagain Communities*

**Anchorage Airport Update**  
October 2015

**1. Part 150 Noise Study:**

- a. The FAA has completed its review of the Noise Exposure Maps and related descriptions submitted by the Airport, and they now have 180 days to approve the NEMs and Noise Compatibility Program (NCP). Public comment period for the Federal Register notice ended September 25, 2016. FAA's deadline to approve/disapprove the recommendations in the NCP is January 23, 2016. A final Study Input Committee meeting will be scheduled once FAA's review is complete. The draft final report along with previous public comments and responses can be found at [anc150study.com](http://anc150study.com).

**2. Lake Hood Seaplane Base Master Plan Update:**

- a. Advisory Committee Meeting #3 was held September 30<sup>th</sup> to discuss the draft alternatives. Meeting presentation and notes are posted to the project website. A Public Open House will be held in November to also discuss the draft alternatives.
- b. Visit [www.lhdmasterplan.com](http://www.lhdmasterplan.com) for information and to send comments, questions and request to receive notifications/updates.

**3. Concessions:**

- a. Construction of Sushi on the Fly and Kiosk bar in Concourse C will begin this fall.
- b. Construction of a Starbucks coffee shop in the Concourse C Alaska Airlines bag claim will begin this fall.
- c. Chili's restaurant is being rebranded to a barbeque theme restaurant that will offer smoked meats along with standard menu items. Construction scheduled to begin January 2016 and will open in the Spring.
- d. A Lounge in the Concourse C art mezzanine area to complement the native art displays will be constructed January through March. The Lounge will include an upscale bar, big screen television for viewing Alaska themed shows and sporting events, and an area for passengers to relax.
- e. Construction of an Alaskan Outfitters store in the bag claim 4 area will begin this fall. The store will offer hunting and fishing licenses and gear.

**4. Lake Hood Seaplane Base:**

- a. Invasive plant species elodea detected at Lake Hood Seaplane Base. Herbicide applications completed by Alaska Department of Natural Resources.
- b. A & B General Aviation Parking Reconstruction: Bravo ramp work is complete and open for aircraft. Alpha ramp under reconstruction with completion this fall.
- c. The next Lake Hood User Group is planned for Thursday, October 22nd from 11:30am-1:30pm at the Alaska Aviation Heritage Museum.

- 5. Point Woronzof Bluff Erosion:** The US Army Corps of Engineers recently completed a draft fact sheet for the bluff erosion. The study identifies the cause and importance of stopping the erosion and presents a conceptual solution--large rock at the base of the bluff. The estimated cost is \$48 million. The draft fact sheet is available on the airport website [www.anchorageairport.com](http://www.anchorageairport.com).

- 6. Title 17 Regulations:** DOT&PF is proposing changes to the Title 17 Regulations that cover Anchorage and Fairbanks International Airports. The changes can be viewed at <https://aws.state.ak.us/OnlinePublicNotices/Notices/View.aspx?id=176979>. Public notice will occur when an effective date of the regulations changes is determined.

- 7. Runway 7L/25R Closure:** The northerly of the two east-west runways will be closed through Oct 31 for reconstruction. This may cause a slight increase in air traffic over the residential community when one of the other runways needs to be closed briefly for maintenance, or due to weather conditions.

8. **Runway 15/33 Closure:** The runway is expected to be closed for approximately two weeks in October for routine maintenance and survey preparatory work for anticipated 2018 reconstruction. This may cause periods of changing traffic patterns during this time.
9. **Sign up for GovDelivery:** at [www.anchorageairport.com](http://www.anchorageairport.com) to receive emails on all sorts of DOT related things.
10. **Visit us on Facebook and Twitter.**





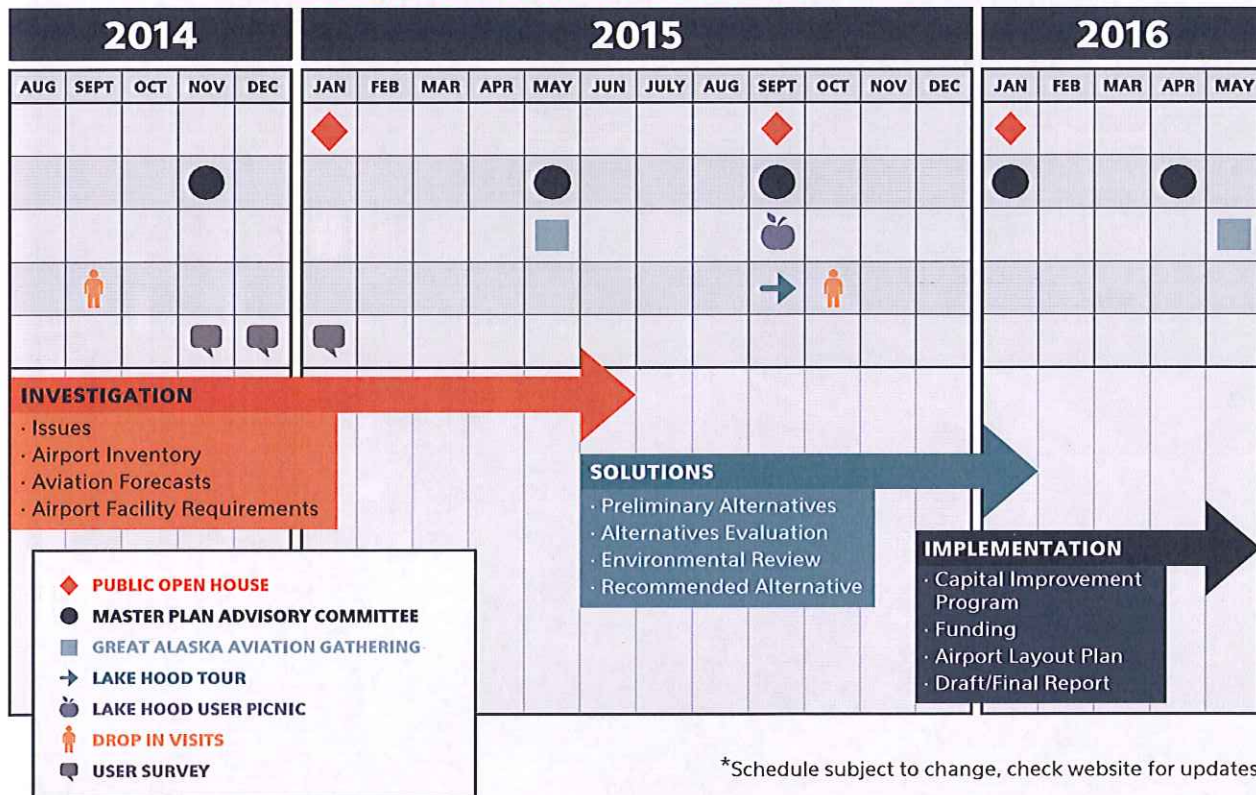
# LAKE HOOD SEAPLANE BASE MASTER PLAN UPDATE

Tom Middendorf, Project Manager  
Leah Henderson, Assistant Project Manager  
DOWL | 907-562-2000

## What is a Master Plan?

An airport master plan is an important tool in determining an airport's current and future development needs. The Federal Aviation Administration (FAA) recommends that a master plan be completed for busy airports every 5-7 years. Lake Hood Seaplane Base (LHD) last completed a master plan in 2006. See below for a schedule of upcoming meetings and initiatives.

## LAKE HOOD SEAPLANE BASE MASTER PLAN UPDATE SCHEDULE



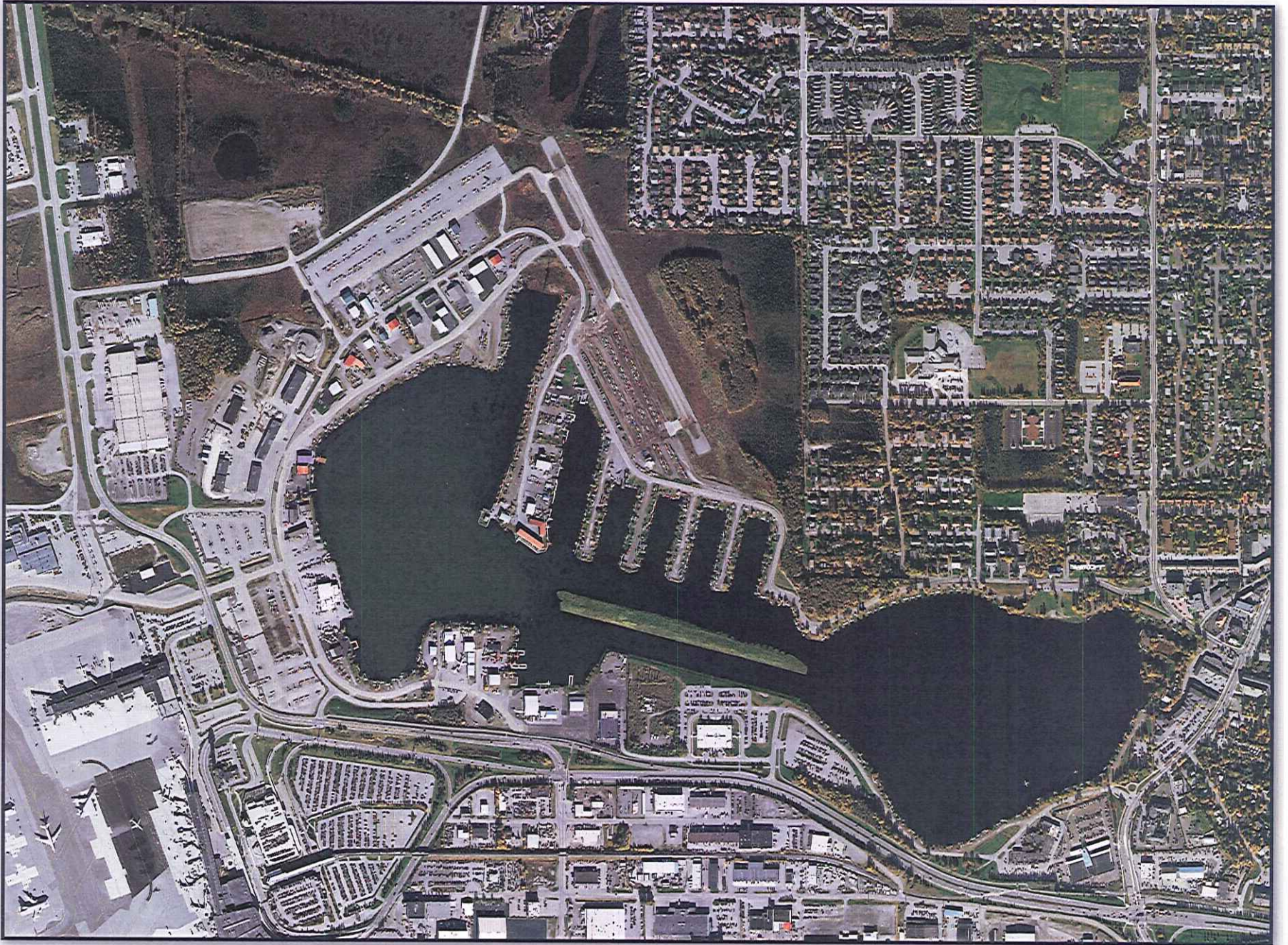
\*Schedule subject to change, check website for updates.

## How can you stay involved?

- Attend an Open House
- Attend an Advisory Committee Meeting
- Email the project team at [lhdmasterplan@dowl.com](mailto:lhdmasterplan@dowl.com)
- Visit the website at [www.lhdmasterplan.com](http://www.lhdmasterplan.com)







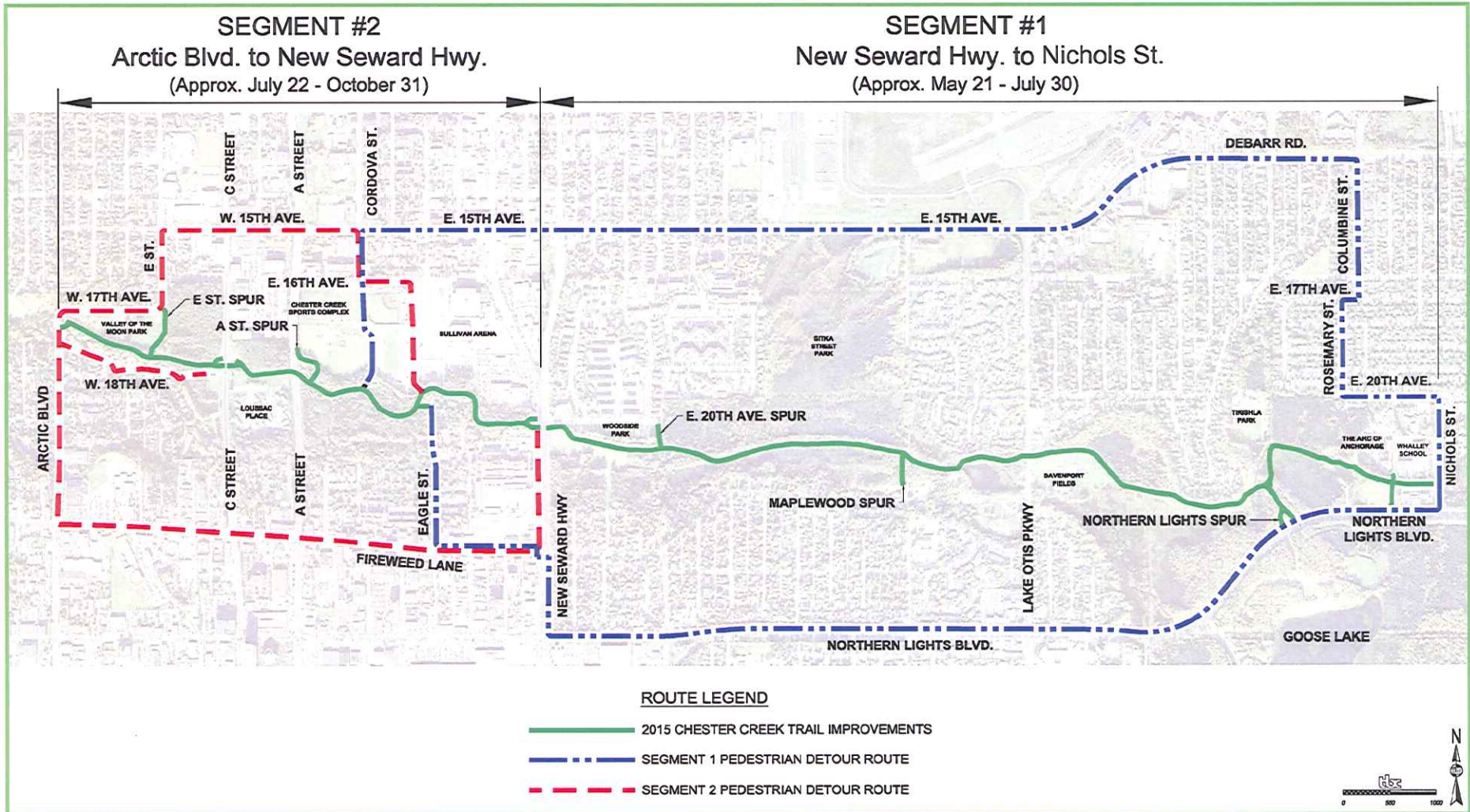
Tom Middendorf, Project Manager | Leah Henderson, Assistant Project Manager | DOWL | 907-562-2000



# 2015 Lanie Fleischer Chester Creek Trail Construction

The Lanie Fleischer Chester Creek Trail is a four-mile long paved, multi-use trail that parallels Chester Creek from Westchester Lagoon to Goose Lake. Anchorage residents use this major recreation and non-motorized transportation thoroughfare year-round for biking, running, walking, skiing, and commuting.

Anchorage Parks and Recreation received over \$3.2 million in funding in 2012, 2013 and 2014 to resurface and upgrade the Chester Creek Trail. These funds are being used to continue a multi-year, comprehensive Parks Department trail repair program to address serious safety concerns, including the rehabilitation/replacement of cracked and heaving asphalt, bridges transitions, amenity upgrades and improved signage and wayfinding.



For **DETOUR MAPS** and **MORE INFORMATION** visit:  
<http://www.muni.org/Departments/parks/Pages/ChesterCreekImprovements2.aspx>

For questions contact Maeve Nevins, Park Planner, Phone: 907-343-4135, Email: [nevinsmv@muni.org](mailto:nevinsmv@muni.org)



## 2015 events we accommodate include:

- June 13th: Alaska Run for Women
- June 20th: Mayor's Midnight Sun Marathon
- July 18th: Alaska Men's Run
- August 15 & 16th: Big Wild Life runs
- October 17th: Zombie 1/2 Marathon



## Fish Creek Sewer Rehabilitation Phase 2

### SEWER WORK NEAR FISH CREEK & THE ALASKA RAILROAD

**WHO?** Anchorage Water & Wastewater Utility

**WHAT?** Repair of 36-inch sewer under the Alaska Railroad.

**WHERE?** North end of LaHonda Drive near Fish Creek

**WHEN?** Late July through early November. Exact schedule has yet to be determined.

**WHY?** Pipe is showing signs of failure.

**HOW?** Construction will be trenchless technology, however, excavation pits are necessary to access the pipes on either side of the railroad tracks.

Construction clearing will begin soon in your area. Large construction equipment and dump trucks will be traveling through your neighborhood to access the construction site.

Expect construction traffic noise during the hours of 7:00AM – 7:00PM, Monday - Saturday and occasionally on Sundays.

*We understand the inconvenience and we thank you in advance for your patience during this AWWU construction project.*

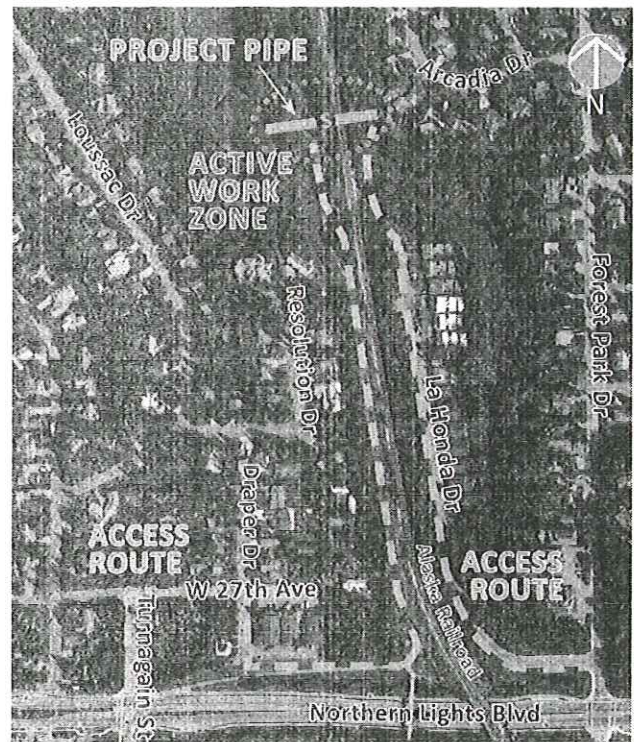


Anchorage Water & Wastewater Utility  
Clearly



## Fish Creek Sewer Rehabilitation Phase 2

### SEWER WORK NEAR FISH CREEK & THE ALASKA RAILROAD



**Questions? Please call:**

**AWWU  
PROJECT MANAGER**  
Mark Corsentino, PE  
(564-2784)

**STEPHL ENG.**  
Brian Gastrock  
(562-1468)

**AWWU  
PROJECT INSPECTOR**  
Jeff Hurd  
(786-5526)

**CONTRACTOR**  
Southcentral Construction  
(907-953-9631)



Anchorage Water & Wastewater Utility  
Clearly





# AWWU Fish Creek Rehabilitation Project

The Anchorage Water and Wastewater Utility inspected portions of its large diameter sewer interceptors in 2011 and 2012. During these investigations, several areas of the Fish Creek interceptor were identified as having structural problems with the potential for pipe failure. AWWU has been working over the last three years to implement rehabilitation of the interceptor to prevent failure and potential discharge of untreated sewage to the environment due to a pipe failure.

The Rehabilitation Project involves three phases:

**Phase 1** - Work was completed between May and July 2015 to install a structural pipe within the existing pipe near Pump Station 2, north of Westchester Lagoon.

**Phase 2** - Work is anticipated to last until November. This includes the replacement of failed pipe beneath the Alaska Railroad northwest of Lahonda Drive. This also includes the construction of an access route within the Alaska Railroad (ARRC) right-of-way to facilitate Utility access to Phase 3, as well as provide long term access for future Utility maintenance of the Fish Creek Interceptor.

As part of the access road construction within ARRC's right-of-way, the railroad required the installation of a safety fence. Southcentral Construction is the Utility's contractor for Phase 2.

**Phase 3** - Work will include the replacement of a failing small diameter sewer main that lies within the Fish Creek Estuary. In addition, improvements will be made to several manholes within the Estuary that have structural problems. This is scheduled to be performed during winter conditions when the ground is frozen so as to minimize impacts to the Estuary. This phase of construction was recently bid and Neeser Construction is the apparent low bidder with an award of a construction contract pending.

AWWU recognizes the work within this corridor is disruptive to those that live adjacent to it. As part of the permit for working within ARRC ROW, AWWU had to construct a safety fence. AWWU agreed to construct the fence because of the need for a safe environment during our construction process and for future safe operations for the Alaska Railroad.



## Contacts:

**AWWU Fish Creek Project Information:**  
**Mark Corsentino, P.E., Project Manager**  
 564-2784 [Mark.Corsentino@awwu.biz](mailto:Mark.Corsentino@awwu.biz)

**Alaska Railroad Corridor Information:**  
**Tim Sullivan Jr., Manager, External Affairs**  
 265-2357 [sullivant@akrr.com](mailto:sullivant@akrr.com)



Installation of safety fence near Northern Lights Boulevard, looking south.



Installation of safety fence near Fish Creek Estuary, looking north.