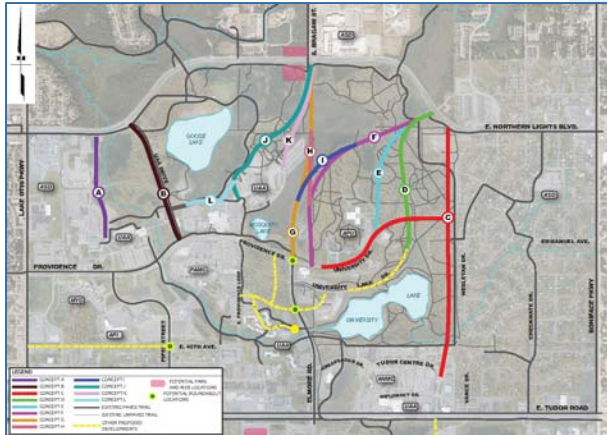


# ► Northern Access to U-Med District



## Public Meeting Wendler Middle School May 18, 2011 6:00 p.m. - 8:00 p.m.



The State of Alaska Department of Transportation and Public Facilities (DOT&PF) is conducting a reconnaissance study on access needs between northeast Anchorage and the U-Med District. The Northern Access to U-Med District Project assesses current and future traffic demand and evaluates alternatives for a northern access from Northern Lights Boulevard between Lake Otis Parkway and Boniface Parkway.

### Purpose and Need

#### Purpose:

- Improve the mobility of people and goods.
- Improve safety of motorized and non-motorized traffic.
- Accommodate projected traffic growth and development in the U-Med District.

#### Need:

- The U-Med District is one of the largest employment centers and highest traffic generators in Anchorage, yet there is no direct access from the north or east.
- Arterial streets surrounding the U-Med District are over capacity and operate at poor levels of service during peak periods.
- Several of the U-Med District intersections have elevated road segment and intersection crash rates.



[www.umednorthernaccess.com](http://www.umednorthernaccess.com)





[www.umednorthernaccess.com](http://www.umednorthernaccess.com)

## We Need Your Input!

The DOT&PF invites you to a public meeting on the Draft Reconnaissance Report for the project on Wednesday, May 18, 2011, Wendler Middle School, 2905 Lake Otis Parkway, Anchorage, Alaska. The meeting will provide an overview and information on the project and allow for public input, comments and questions.

Public input is essential for the creation of a successful project. Please attend and share your thoughts.

**Wednesday  
May 18, 2011**

**Open House, Public  
Comments/Q&A**

**6:00 p.m. - 8:00 p.m.**

**Presentation**

**7:00 p.m.**

## Submit Your Comments

To submit comments, or for additional information visit the website at [www.umednorthernaccess.com](http://www.umednorthernaccess.com)

Mail to: Maryellen Tuttell  
DOWL HKM  
4041 B Street  
Anchorage, Alaska 99503

Phone: 907-562-2000

Fax: 907-563-3953

E-mail: [umednorthernaccess@dowlhkm.com](mailto:umednorthernaccess@dowlhkm.com)

Individuals with a hearing impairment may contact DOT&PF at text phone (907) 465-4647. DOT&PF is able to offer, upon request, reasonable accommodations for special needs related to other disabilities.



**► Northern Access  
to U-Med District**



Maryellen Tuttell  
DOWL HKM  
4041 B Street  
Anchorage, Alaska 99503