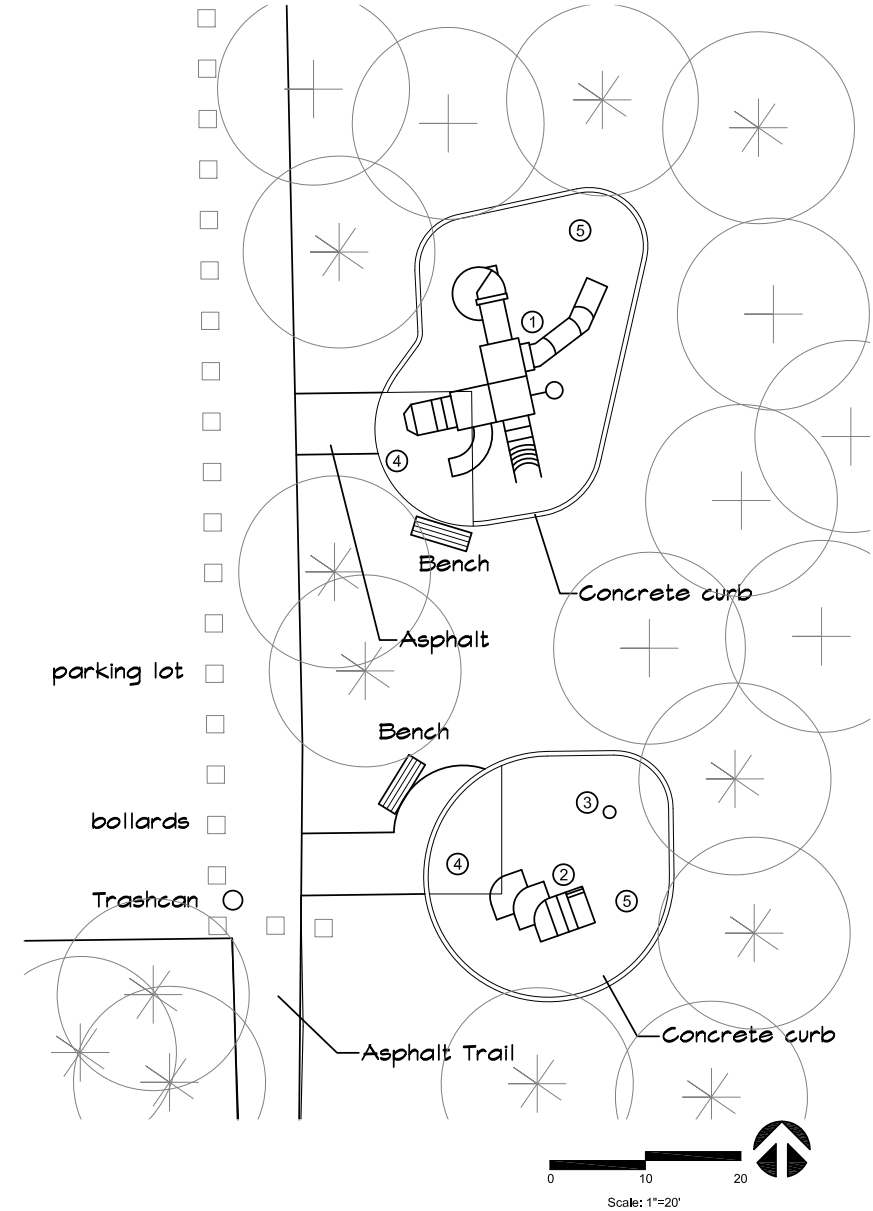


Basics

2245 Baxter Road
NE Park District
Northeast Community Council
Legis. Dist. 19J; Assem.Dist. 5
45.25 acres

This area was converted from a gravel pit to a man-made lake in 1972. Additional land for the park was purchased in 1975. The playground was installed in 1993. Roadway improvements to Baxter resulted in landscaping and related improvements in 2001.

2008 grade A



Setting

Outer Park Edges & Entry

The park encompasses Cheney Lake. Large stands of native forest occur along the east perimeter. The west edge has high density residential, remant forest and landscape areas. The north and south ends are bound by single family residential. There are several of points of entry: near the parking lot, at trail from Nunaka Valley Park, off East 16th Avenue, and an entry at the end of Foothill Drive.

Active Recreation Areas

Active recreation is supported by the Playground, Trails around lake, Boating, and Fishing from the shorelines.

Passive Recreation Areas

Picnic Tables and Benches are located along the lakes perimeter. In addition, boulders along the shoreline provide passive recreation opportunities. Birdwatchng on the shores of the lake is popular.

Playgrounds

Equipment List

No.	Item	Description	Issues/concerns
1	Play Structure	ages 5-12, metal/plastic, Gametime(?)	Poor condition, broken slide, missing elements
2	Play Structure/ sand play	ages 2-5 wood/plastic, Kompan	Fair condition, missing a pull rope
3	Lamb Spring Toy	single seat, wood/metal, Kompan,	Fair condition, paint chipped and faded
4	Safety Surface	Poured-in place	Good condition
5	Safety Surface	Sand	Depth Inadequate, hardpan

Accessibility Overview

Equipment does not meet ADA. Play structure needs to be coordinated with manufacturer for ADA upgrades; surfacing change may be requied to create more accessible play events.

Pathways

A variety of trail types encircle the park (dirt, gravel, and asphalt).

Green Space

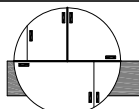
The park includes many acres of native forest. Three wetland areas have been identified as preservation on the east and north banks of the lake. Overall the park has very few impermeable surfaces and actually functions as part of the MOA stormwater system.

Photo Inventory



NE Park District

date	9/12/09
revision	



earthscape

1343 G Street, suite 101 Anchorage, Alaska 99501
(907) 279-2688 ehugglins@earthscape.alaska.com

Department
of Parks and
Recreation

Municipality
of Anchorage

Healthy
Parks



Healthy
People

Cheney Lake Park

Site Inventory
& Analysis

L1.0
sheet X of X