

55' X 28' REFUSE PAD
6" PCC W/#4 16" OC EW
SEE LANDSCAPE FOR SCREENING

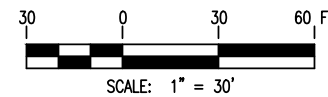
LOT 1
PER PLAT 2014-82

TRACT A-1
PER PLAT 2020-36

TRACT B
PER PLAT 70-82

SITE LAYOUT PLAN
SCALE: 1" = 30'

GRAPHIC SCALE



P.O. BOX 92946
ANCHORAGE, ALASKA 99509
907/360-0985
LICENSE # 102525

ANCHORAGE TRAINING CENTER
5800 BOUNDARY AVENUE

TRACT A, GLENN SUBDIVISION

REVISION	DATE	DESCRIPTION	BY

DATE	10.25.2024
PN	47001
GRID	SW1238
SCALE	AS SHOWN
ENGINEER	MAB
DRAFTER	MAB

SHEET TITLE
SITE LAYOUT PLAN

SHEET NUMBER
C301
3 OF 6

Drawing C:\Users\blittle\Desktop\Working Away\Projects\BIG-24-05 5800 Boundary Ave\2 - CAD\Corvus-Sheets.dwg last saved on 10/28/2024 3:26 PM was plotted by Bradley Little on 10/28/2024 4:02 PM

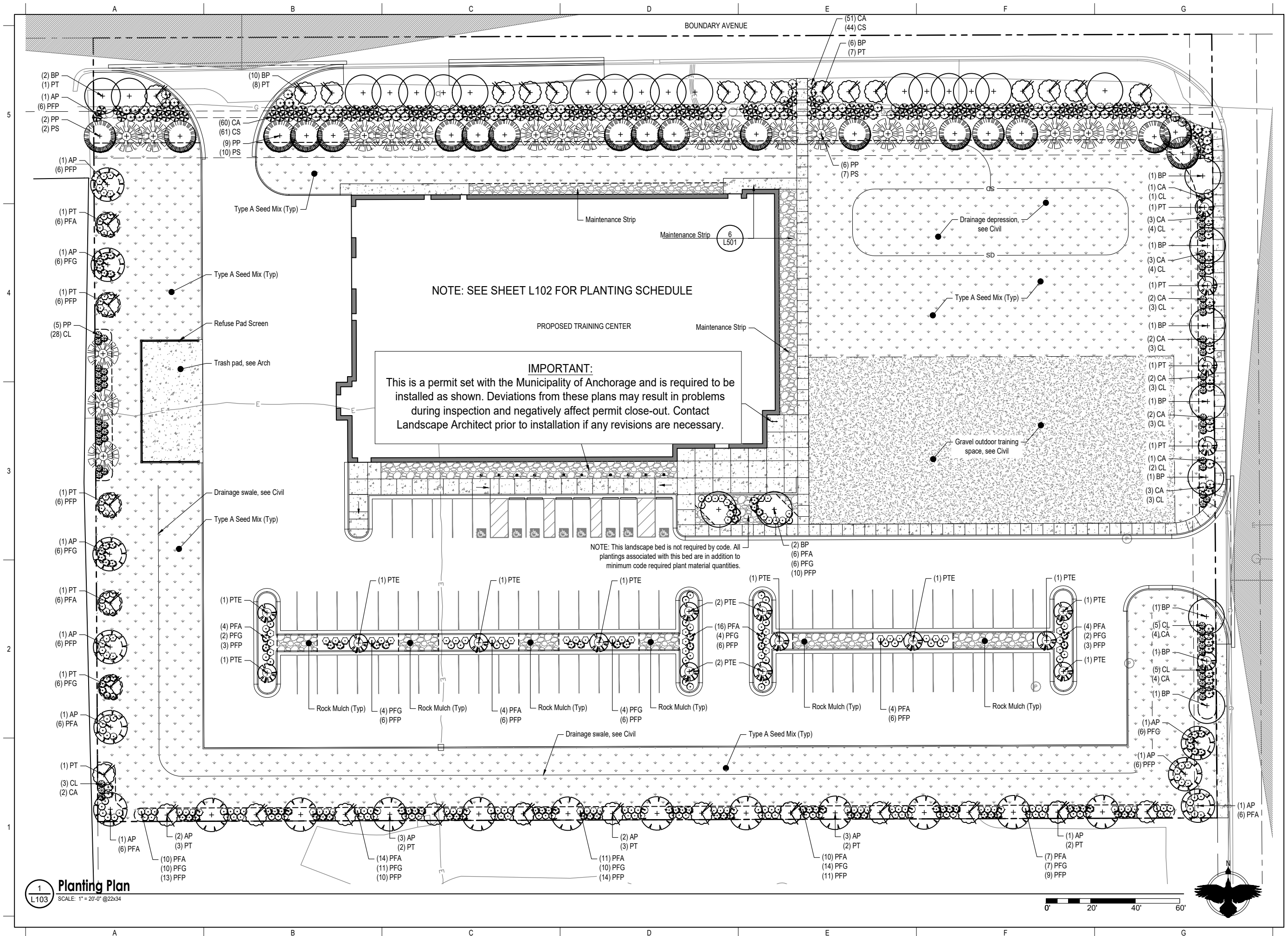
SEAL:

THREE B COMPANY
5800 BOUNDARY AVENUE
 DRAFT PERMIT DRAWINGS
 ANCHORAGE, AK

If the above dimension does not measure exactly 1", this drawing has been enlarged or reduced, affecting all scales.

DATE: 10/28/2024
 JOB NUMBER: BIG-24-05
 DRAWN BY: BL
 CHECKED BY: PB

PLANTING PLAN
 SHEET #:
L103



1 Planting Plan
 L103 SCALE: 1" = 20'-0" @22x34





3 NORTH - EXT. ELEVATION (FACING GLENN HIGHWAY)
1/8" = 1'-0"

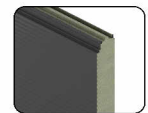
MATERIAL LEGEND



M1 // CAST IN PLACE CONCRETE



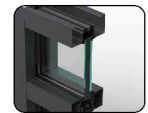
M2 // ALASKAN YELLOW CEDAR



M3 // INSULATED METAL PANEL (RIBBED)



M3.1 // INSULATED METAL PANEL (FLAT)



M4 // BRONZE ANODIZED ALUMINUM WINDOWS



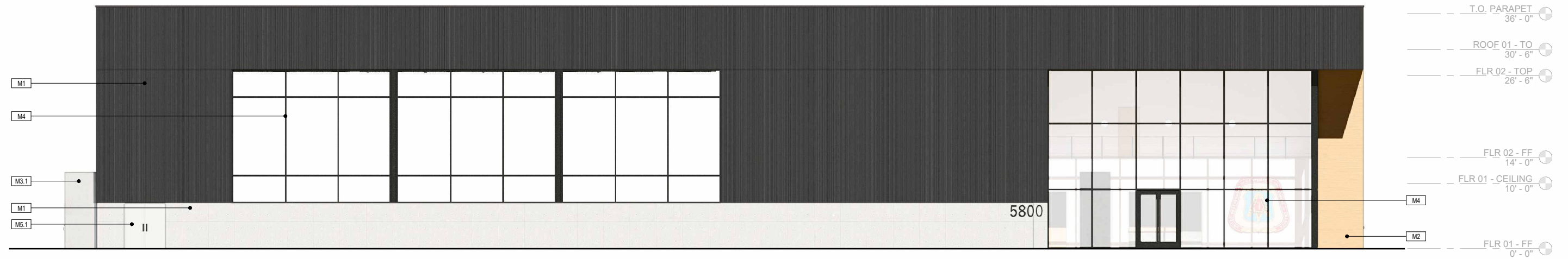
M5 // PAINT - BENJAMIN MOORE - LYONS RED



M5.1 // PAINT - BENJAMIN MOORE - TO MATCH CONCRETE

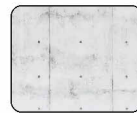


1 EAST - EXT. ELEVATION (FACING NEWELL STREET)
1/8" = 1'-0"



3 SOUTH EXT. ELEVATION (MAIN ENTRANCE AT PARKING LOT)
1/8" = 1'-0"

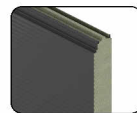
MATERIAL LEGEND



M1 // CAST IN PLACE CONCRETE



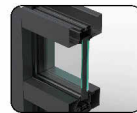
M2 // ALASKAN YELLOW CEDAR



M3 // INSULATED METAL PANEL (RIBBED)



M3.1 // INSULATED METAL PANEL (FLAT)



M4 // BRONZE ANODIZED ALUMINUM WINDOWS



M5 // PAINT - BENJAMIN MOORE - LYONS RED



M5.1 // PAINT - BENJAMIN MOORE - TO MATCH CONCRETE



1 WEST - EXT. ELEVATION
1/8" = 1'-0"