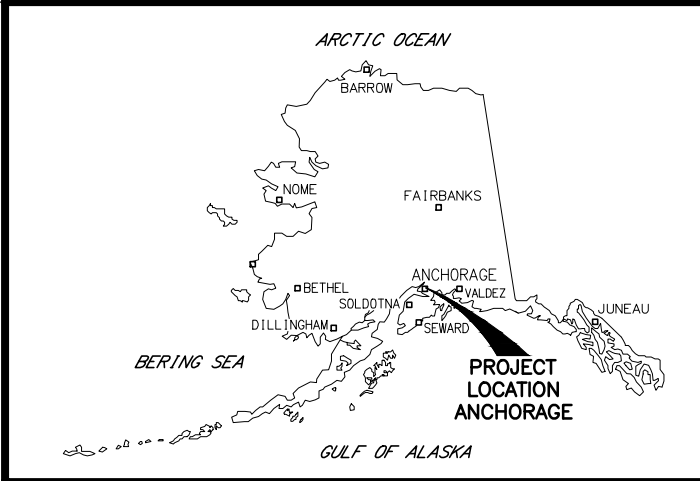
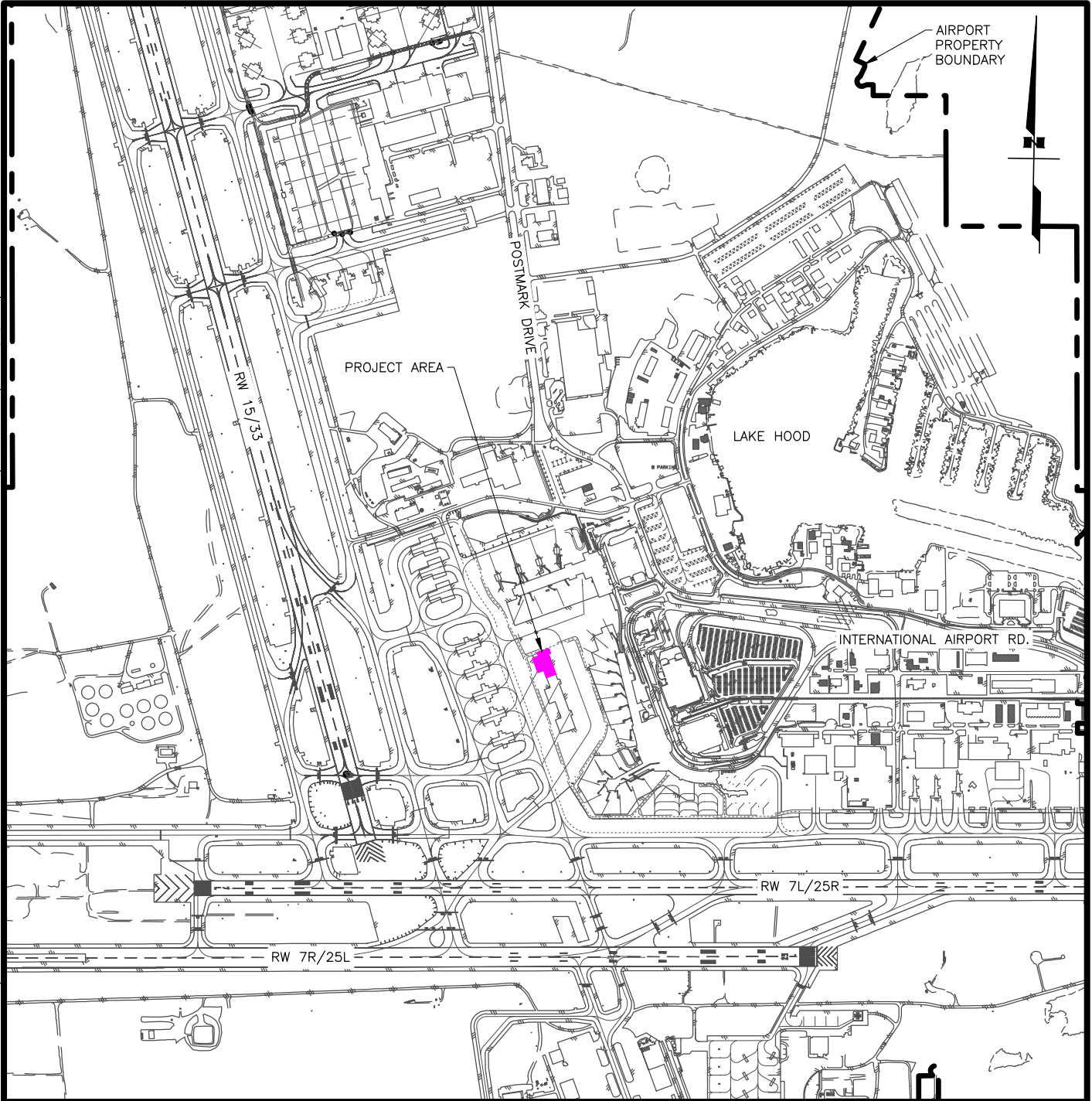


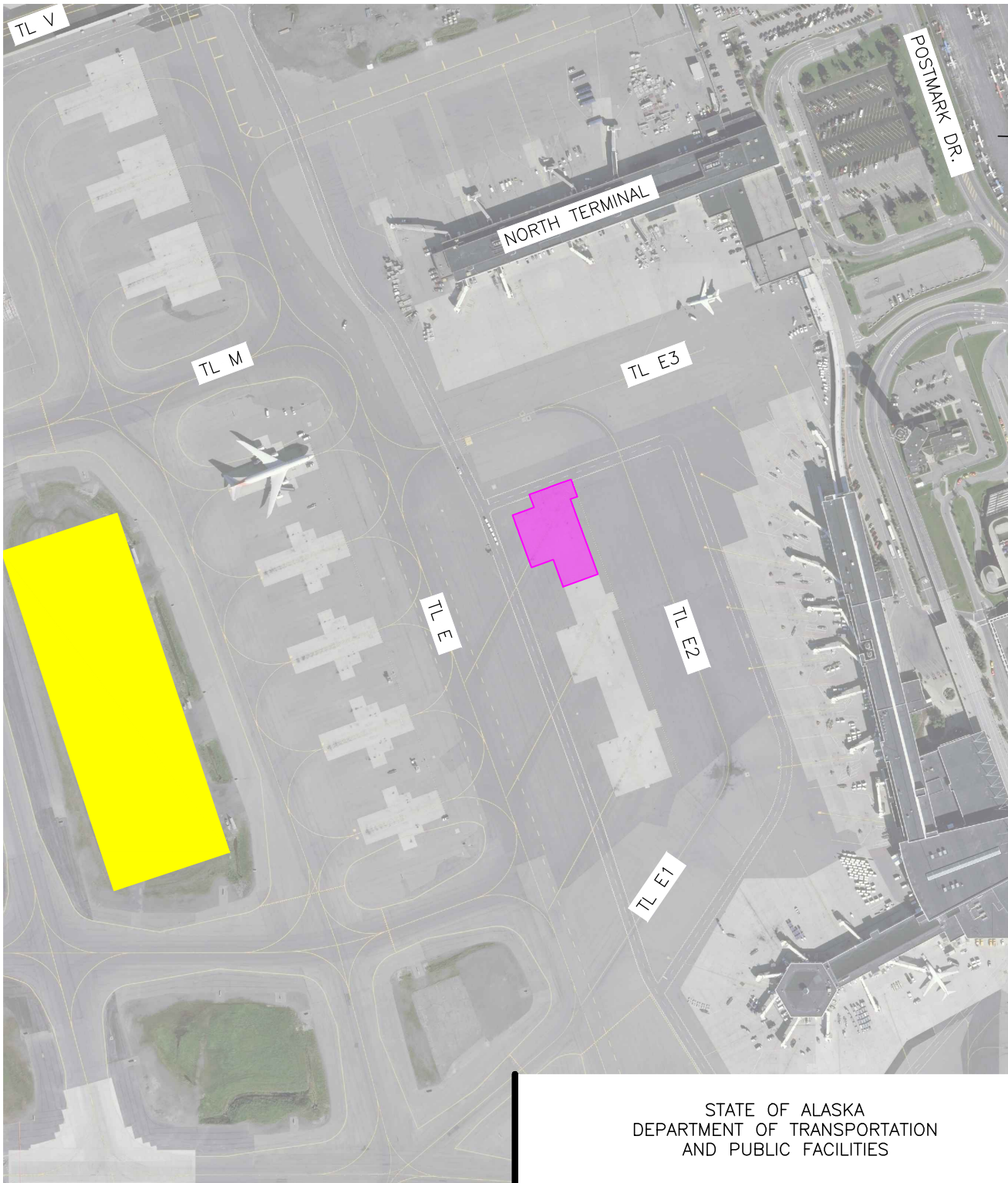
DRAWING LOCATION: J:\URS\DATA\2027-51-ANC RON 2 REHABILITATION\00 CAD\02 FIGURES\01104 OF FIG 1 VICINITY.DWG
DRAFTED BY: RRB
PLOTTED 7/11/2017



STATE OF ALASKA
DEPARTMENT OF TRANSPORTATION
AND PUBLIC FACILITIES

TED STEVENS ANCHORAGE INTERNATIONAL
AIRPORT

ANC RON 2 REHABILITATION
PROJECT NO. CFAPT01104
FIGURE 1
LOCATION AND VICINITY MAP



LEGEND

- PRIMARY STAGING AREA
- PROJECT AREA

STATE OF ALASKA
 DEPARTMENT OF TRANSPORTATION
 AND PUBLIC FACILITIES

TED STEVENS ANCHORAGE INTERNATIONAL
 AIRPORT

ANC RON 2 REHABILITATION
 PROJECT NO. CFAP01104
 FIGURE 2
 PROPOSED IMPROVEMENTS

STATE OF ALASKA
DEPARTMENT OF TRANSPORTATION
AND PUBLIC FACILITIES

TED STEVENS ANCHORAGE INTERNATIONAL
AIRPORT

ANC RON 2 REHABILITATION
PROJECT NO. CFAPT01104
FIGURE 3.
AREAS OF POTENTIAL EFFECT

LEGEND

- PROJECT LIMITS
- STAGING AREAS

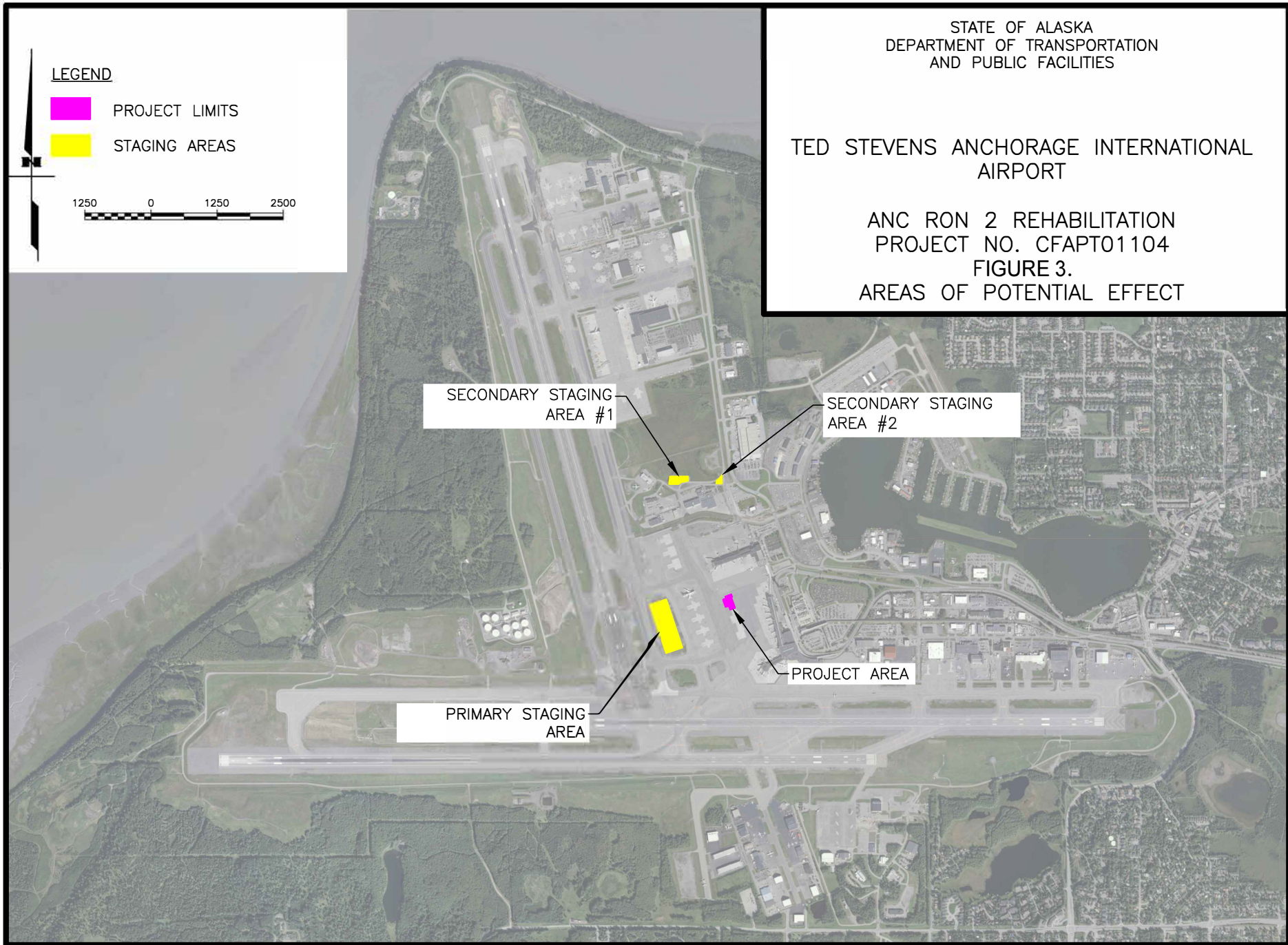
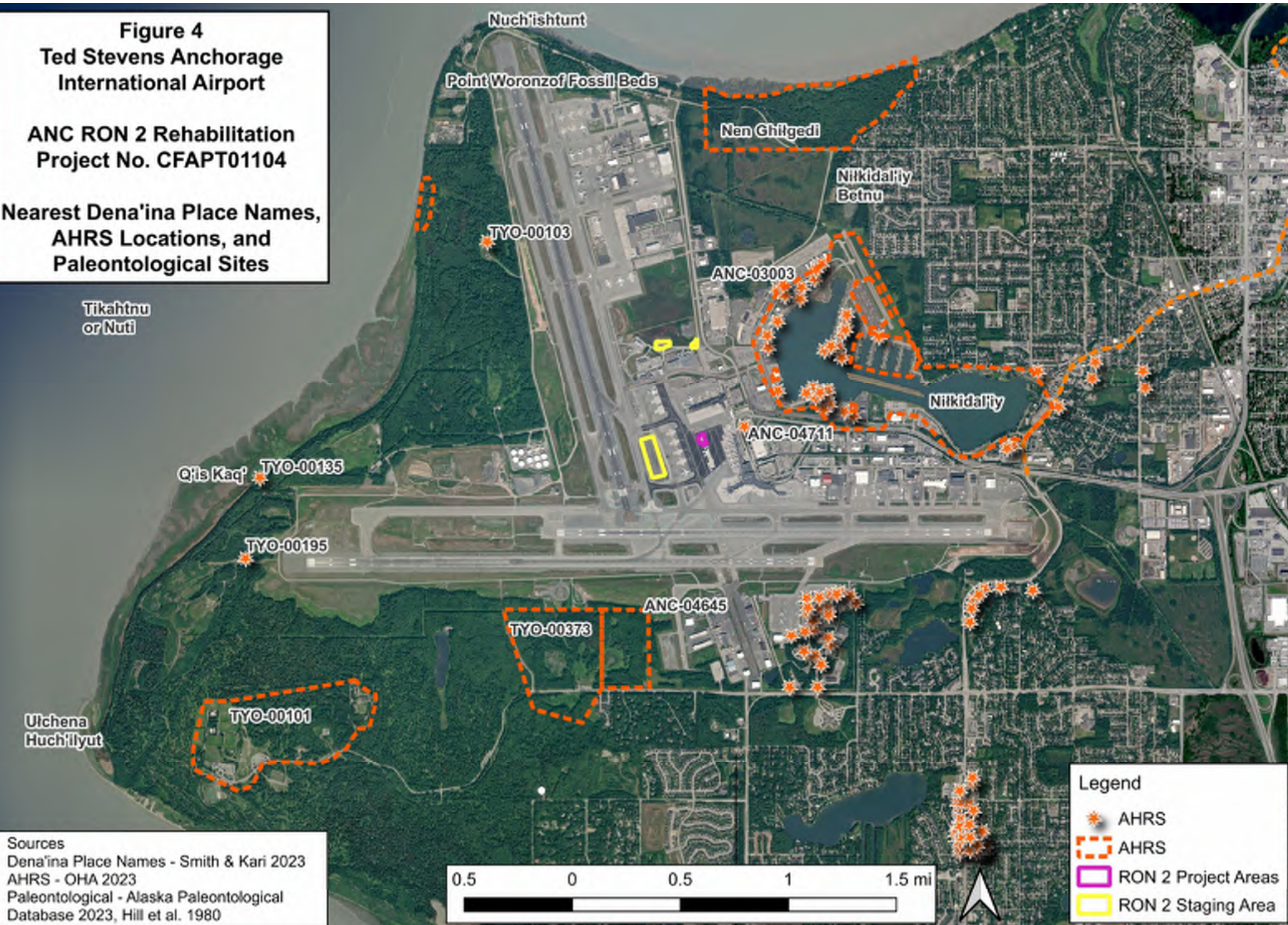


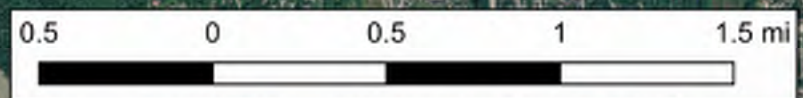
Figure 4
Ted Stevens Anchorage International Airport

ANC RON 2 Rehabilitation
Project No. CFAPT01104

Nearest Dena'ina Place Names,
AHRS Locations, and
Paleontological Sites



Sources
 Dena'ina Place Names - Smith & Kari 2023
 AHRS - OHA 2023
 Paleontological - Alaska Paleontological Database 2023, Hill et al. 1980



Legend

- AHRS
- AHRS
- RON 2 Project Areas
- RON 2 Staging Area

Figure 5
Ted Stevens Anchorage
International Airport

ANC RON 2 Rehabililtatlon
Project No. CFAPT01104

Nearest Dena'ina Place Names,
AHRS Locations, and
Paleontological Sites, Closer View

