

MEMORANDUM

TO: Jacques Boutet, P.E. W.O. D59318
FROM: Steve K. Noble, P.E.
DATE: December 16, 2005
SUBJECT: 13th Avenue and Gambell Street Intersection Improvements

The State of Alaska Department of Transportation and Public Facilities is working with the Municipality of Anchorage (MOA) Traffic Department to construct safety improvements at the intersection of 13th Avenue and Gambell Street as part of the Highway Safety Improvement Program (HSIP). In completing the public involvement effort for HSIP improvements, the Fairview neighborhood expressed the desire for enhancements to be incorporated into the safety project. The MOA is cooperating with the community to use bond funding and state grants to pay for the identified improvements, provided the Fairview Community Council concurs that this project is their top priority for the available funding.

In order to identify the desired enhancements, DOWL Engineers (DOWL) held an open house at DOWL's office on November 16, 2005, to solicit community input in the design of the improvements. DOWL provided graphics and facilitated discussion. The Fairview Community Council provided the public notification for the event. In addition to DOWL staff and the public, representatives from the MOA Traffic and Transit Departments also attended the meeting.

Public concerns discussed during the meeting included:

- pedestrian walkways and safety,
- landscape/aesthetic design,
- bus stop relocation,
- Carrs/Safeway parking and access,
- parking for the building at the northwest corner of the intersection, and
- street lighting improvements.

The workshop participants developed a list of preferred design features to be included in the project. Those features, in descending order of preference, were:

- Priority 1 - Landscaping and lighting improvements at the northwest corner of the intersection.
 - 5 deciduous trees; canopies that are pruned up to eight feet in height – easy to see under
 - 80 – 100 shrubs; deciduous and evergreen
 - 110 linear feet of Fairview fencing

- Removal of existing paving to incorporate planting beds
- Topsoil and seeding for areas adjacent to the fencing back to the shrub plantings
- Priority 2 – Install a wider median (i.e., wider is necessary to construct the HSIP project) in 13th Avenue that can accommodate trees and other landscaping elements.
 - 12-foot-wide median with tree and shrub planting
 - 4 trees; 30 deciduous shrubs/20 evergreen shrubs
 - Curbing for median
- Priority 3 – Perimeter landscaping and an aesthetic features around the Carrs/Safeway parking lot to enhance the image of the area and provide better definition of the parking lot entrance exits.
 - 125 linear feet of Fairview fencing
 - Reconfiguration of parking lot on east side of Carrs/Safeway building
 - Incorporating new parking lot islands between the west parking lot for Carrs/Safeway and 13th Avenue
 - Implementing new plantings between Gambell Street and the reconfigured parking lot on the east side of Carrs/Safeway
 - 5 flowering trees; 105 deciduous shrubs; 25 evergreen shrubs
- Priority 4 - Landscaping improvements and relocated bus stop boarding pads to the east side of Gambell Street.
 - Incorporating new plantings near relocated bus stops to the east of Gambell St4335; 25 deciduous shrubs and 10 evergreen shrubs
 - Concrete pad for bus stops
 - Curb extension on the southeast side of the 13th Avenue and Gambell Street intersection
 - 65 linear feet of Fairview fencing
 - Trash receptacles (2)
 - Benches for the bus stop (2)
 - Lighting (2)
- Priority 5 – Textured crosswalks on 13th Avenue.
 - Cut and remove existing pavement in crosswalks
 - Construct new crosswalks at the intersection of 13th Avenue and Gambell Street with a colored and imprinted concrete (at all crossings)

The relocation of the bus stop, identified in Priority 4, was an expressed desire of the community to facilitate policing of the area. Currently, people are able to loiter in this area under the pretense of “waiting for the bus.” With the bus stop relocated, police can enforce the no loitering signage that is posted on the north face of the Carrs store. The representative from the transit department indicated

that the bus stop relocation was already in process and could be completed within four to six weeks. Bus stop enhancements will follow as part of this project.

Priorities 1 and 2 will require the participation of the property owners (VF Grace for Priority 1 and Carrs/Safeway for Priority 2) as the proposed improvements impact the adjacent private properties. Both entities are active in the community and have shown a willingness to work with the community on these issues. Their participation will be a critical part to the success of the project as envisioned by the community.

Conceptual renderings and planning level cost estimates for each of the priorities identified during the workshop are appended. The estimated costs are summarized below:

Intersection Enhancements	
Priority 1	\$100,000
Priority 2	\$ 30,000
Priority 3	\$ 70,000
Priority 4	\$ 30,000
Priority 5	<u>\$ 35,000</u>
Subtotal	\$265000
Contingency (15%)	\$ 34,500
Utility Relocation	\$ 30,000
ROW Acquisition and Costs-to-Cure	\$ 80,000
Engineering and Administration	<u>\$ 60,000</u>
Intersection Enhancements Total	<u>\$469,500</u>

Cost Estimates for 13th and Gambell Site and Landscape Improvements

Priority 1: NW Corner of Intersection

	Quantity	Unit	Unit Cost	Total
Large Shade Trees	5	EACH	\$400.00	\$2,000.00
Large Deciduous Shrubs	18	EACH	\$75.00	\$1,350.00
Small Deciduous Shrubs	45	EACH	\$45.00	\$2,025.00
Large Evergreen Shrubs	15	EACH	\$60.00	\$900.00
Low Growing Evergreen Shrubs	20	EACH	\$45.00	\$900.00
PLANT MATERIAL TOTAL				\$7,175.00
Remove Existing Pavement	330.0	SY	\$5.00	\$1,650.00
Bark Mulch	400.0	CY	\$25.00	\$10,000.00
Fencing	110.0	LF	\$300.00	\$33,000.00
Landscape Edging	95.0	LF	\$2.00	\$190.00
HARDSCAPE MATERIAL TOTAL				\$44,840.00
Seed Mix Schedule A	0.9	MSF	\$350.00	\$315.00
Topsail (24" planting bed areas)	45.0	MSF	\$1,000.00	\$45,000.00
TOPSOIL AND SEED TOTAL				\$45,315.00
PRIORITY 1 TOTAL				\$97,330.00

Priority 2: Landscaped Median

	Quantity	Unit	Unit Cost	Total
Large Shade Trees	1	EACH	\$400.00	\$400.00
Large Deciduous Shrubs	1	EACH	\$75.00	\$75.00
Small Deciduous Shrubs	1	EACH	\$45.00	\$45.00
Large Evergreen Shrubs	1	EACH	\$60.00	\$60.00
Low Growing Evergreen Shrubs	1	EACH	\$45.00	\$45.00
PLANT MATERIAL TOTAL				\$625.00
Remove Existing Pavement	260.0	SY	\$5.00	\$1,300.00
Removal of Curb and Gutter	200.0	LF	\$35.00	\$7,000.00
Removal of Concrete Sidewalk	100.0	SY	\$8.00	\$800.00
A.C. Pavement	70.0	TON	\$80.00	\$5,600.00
Aggregate Base Course, D-1	35.0	TON	\$40.00	\$1,400.00
PCC Curb and Gutter	200.0	LF	\$35.00	\$7,000.00
PCC Sidewalk (4" Thick)	90.0	SY	\$70.00	\$6,300.00
Rock Mulch	8.0	CY	\$31.00	\$248.00
HARDSCAPE MATERIAL TOTAL				\$29,648.00
PRIORITY 2 TOTAL				\$30,273.00

Priority 3: CARRS Driveway Definition and Landscaping

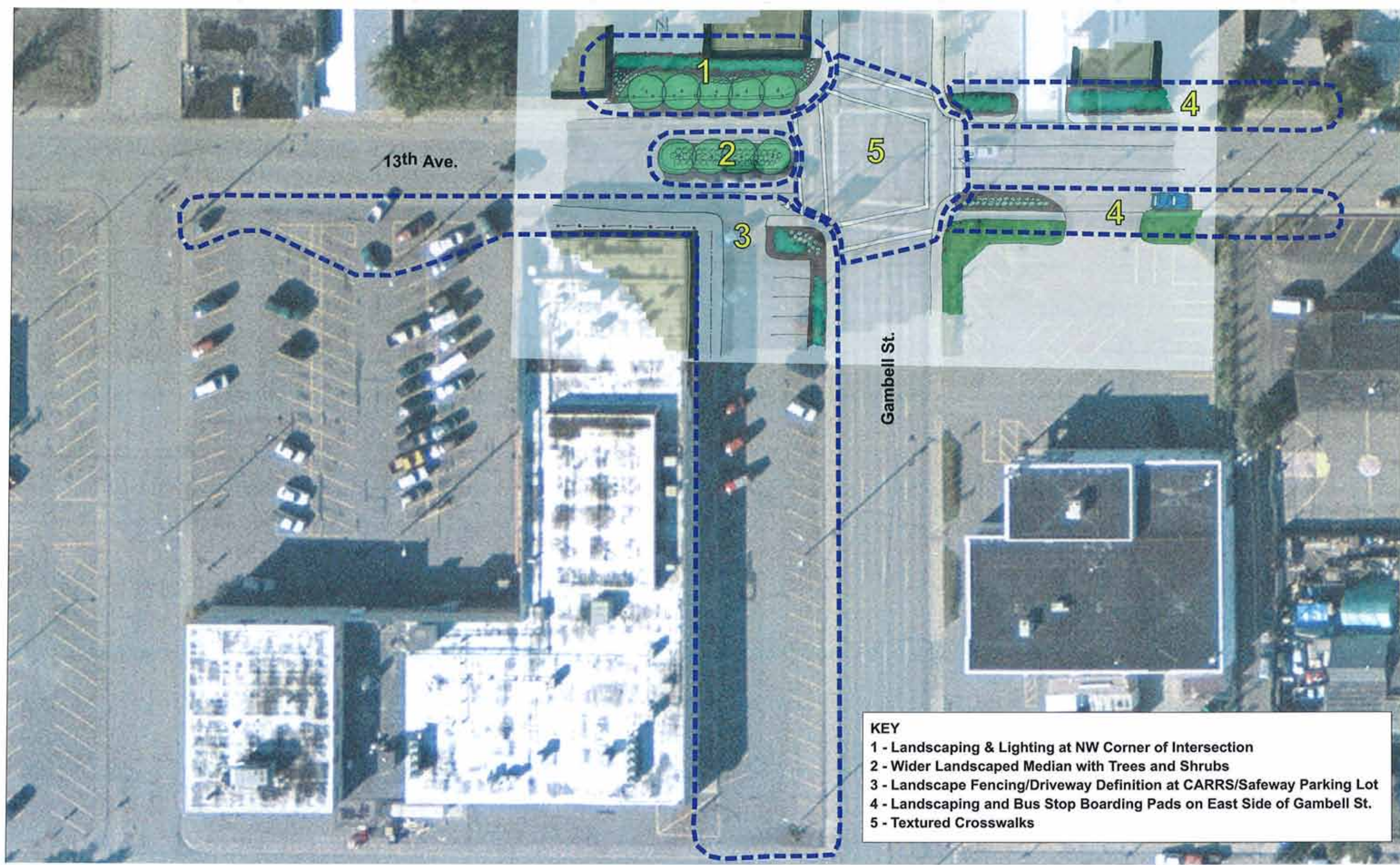
	Quantity	Unit	Unit Cost	Total
Small Decorative Flowering Trees	5	EACH	\$300.00	\$1,500.00
Large Deciduous Shrubs	60	EACH	\$75.00	\$4,500.00
Small Deciduous Shrubs	45	EACH	\$45.00	\$2,025.00
Large Evergreen Shrubs	10	EACH	\$60.00	\$600.00
Low Growing Evergreen Shrubs	15	EACH	\$45.00	\$675.00
PLANT MATERIAL TOTAL				\$9,300.00
Remove Existing Pavement	485.0	SY	\$5.00	\$2,425.00
PCC Curb and Gutter	200.0	LF	\$35.00	\$7,000.00
Bark Mulch	36.0	CY	\$25.00	\$900.00
Rock Mulch (Parking Islands)	23.0	CY	\$31.00	\$713.00
Controlled Access Bollards	1.0	EACH	\$500.00	\$500.00
Fencing	125.0	LF	\$300.00	\$37,500.00
HARDSCAPE MATERIAL TOTAL				\$49,038.00
Topsoil (24" planting bed areas)	3.5	MSF	\$1,000.00	\$3,500.00
TOPSOIL AND SEED TOTAL				\$3,500.00
PRIORITY 3 TOTAL				\$61,838.00

Priority 4: Bus Stop Boarding Pads and Landscaping

	Quantity	Unit	Unit Cost	Total
Large Deciduous Shrubs	15	EACH	\$75.00	\$1,125.00
Small Deciduous Shrubs	10	EACH	\$45.00	\$450.00
Low Growing Evergreen Shrubs	10	EACH	\$45.00	\$450.00
PLANT MATERIAL TOTAL				\$2,025.00
Remove Existing Concrete Curb and Gutter	75.0	LF	\$8.00	\$600.00
Sawcut and Remove Existing Pavement	73.0	SY	\$5.00	\$365.00
PCC Curb and Gutter	75.0	LF	\$35.00	\$2,625.00
Broom Finish Concrete Bus Pads	45.0	SY	\$40.00	\$1,800.00
Fencing	65.0	LF	\$300.00	\$19,500.00
Trash Receptacles	2.0	EACH	\$500.00	\$1,000.00
Benches	2.0	EACH	\$500.00	\$1,000.00
Lighting	2.0	EACH	\$2,000.00	\$4,000.00
HARDSCAPE MATERIAL TOTAL				\$30,890.00
Topsoil (24" planting bed areas)	0.5	MSF	\$1,000.00	\$500.00
TOPSOIL AND SEED TOTAL				\$500.00
PRIORITY 4 TOTAL				\$33,415.00

Priority 5: Textured Crosswalks

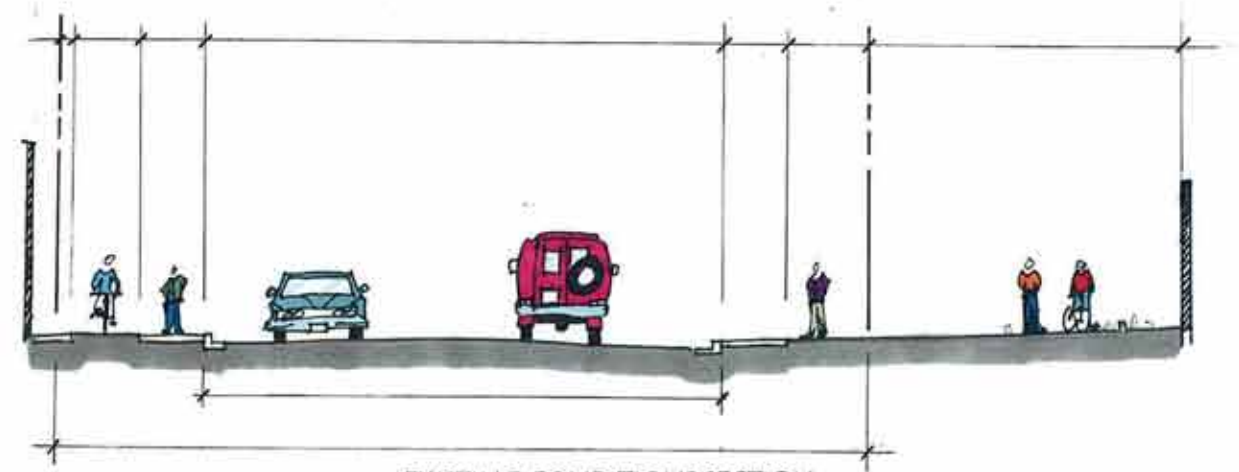
	Quantity	Unit	Unit Cost	Total
Sawcut and Remove Existing Pavement	385.0	SY	\$5.00	\$1,925.00
Imprinted, Colored Concrete Surfacing	385.0	SY	\$65.00	\$25,025.00
A.C. Pavement	57.0	TON	\$80.00	\$4,560.00
HARDSCAPE MATERIAL TOTAL				\$31,510.00
PRIORITY 5 TOTAL				\$31,510.00
TOTAL FOR ALL				\$254,366.00



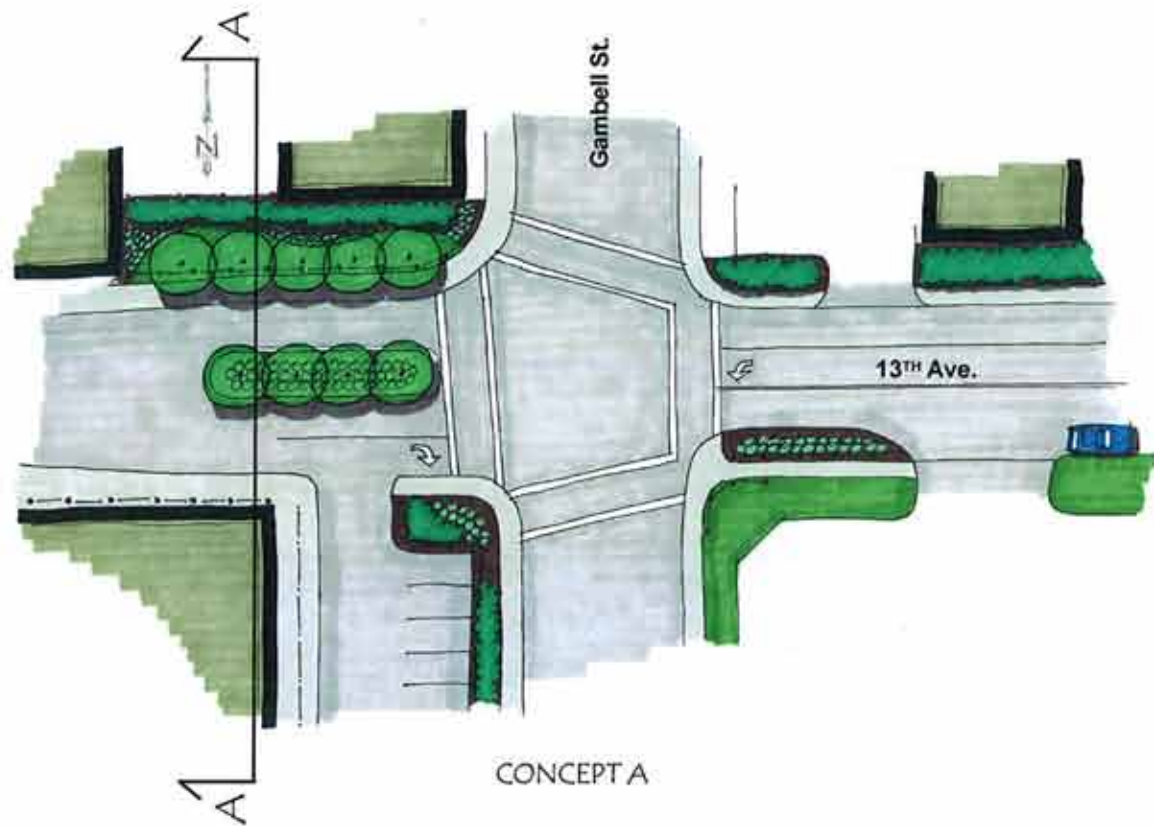
13th and Gambell
Phasing Diagram



EXISTING CONDITIONS AERIAL PHOTO



EXISTING CONDITIONS SECTION



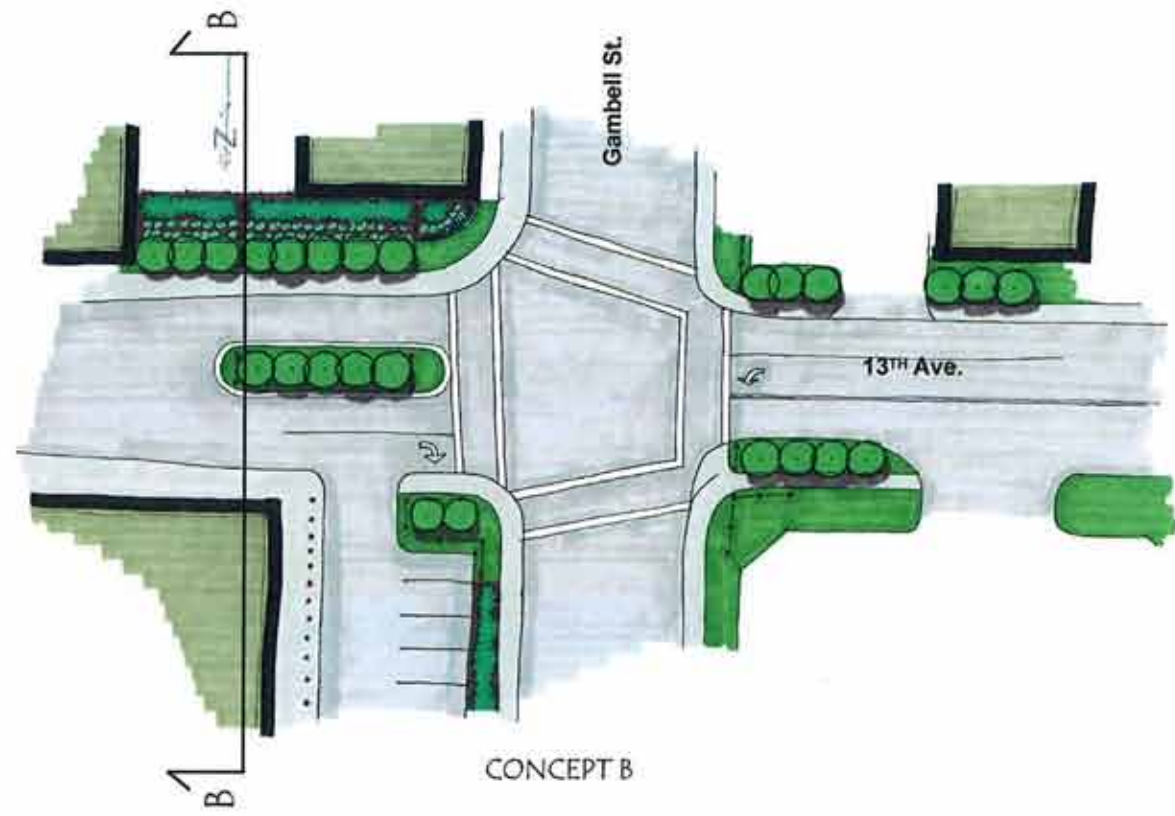
CONCEPT A



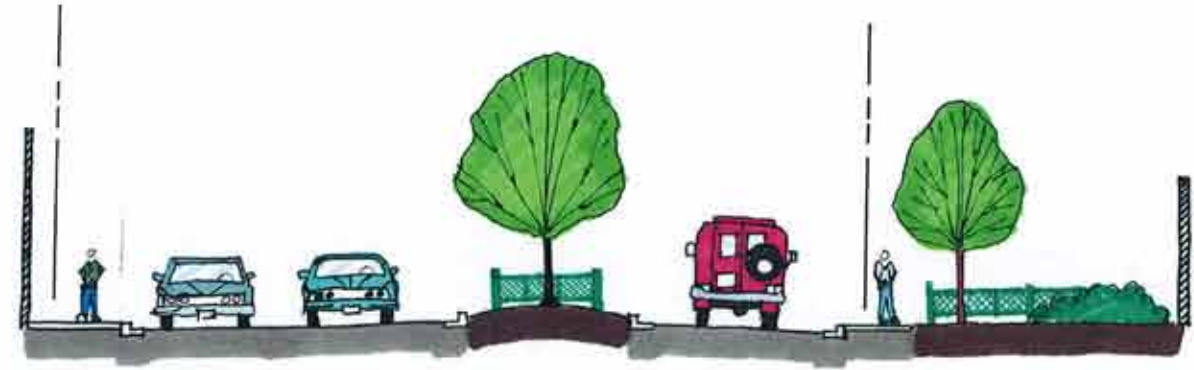
CONCEPT A SECTION



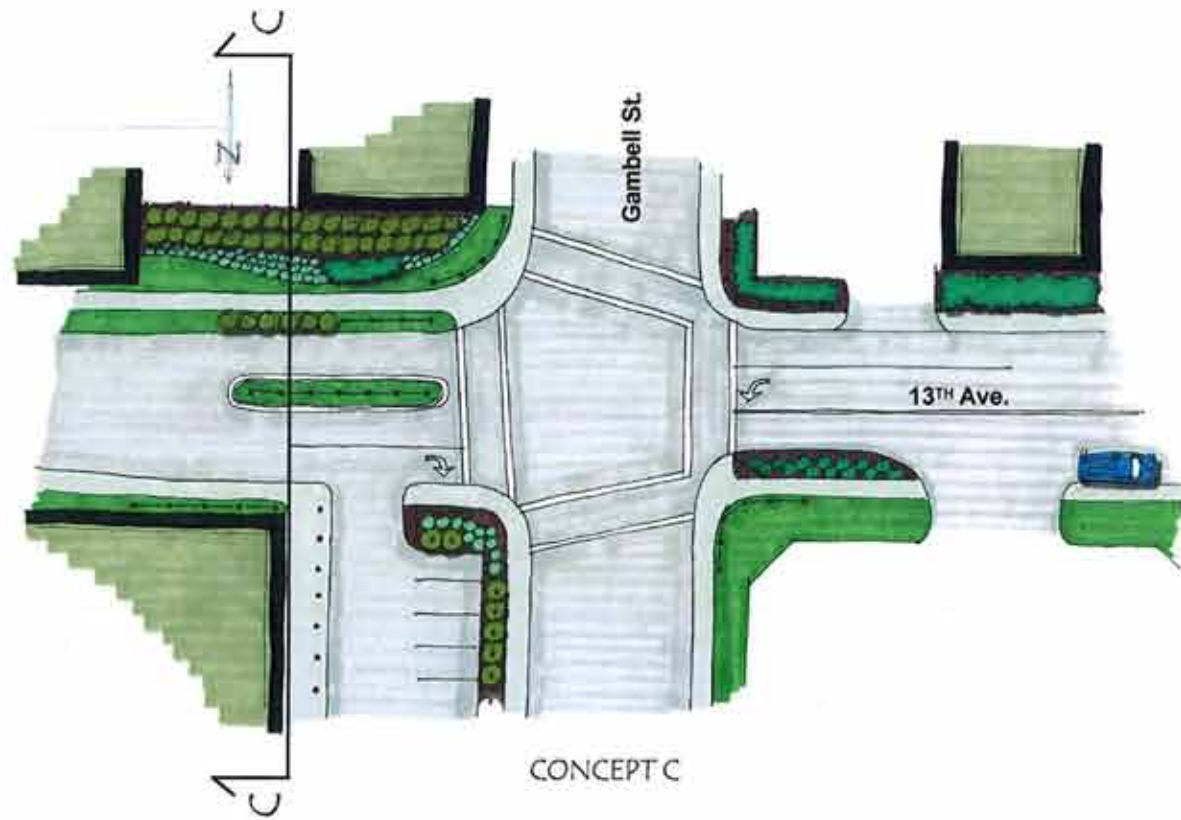
13th and Gambell
 EXISTING CONDITIONS AND CONCEPT A; PLANS AND SECTIONS
 SCALE, OTHER INFORMATION, ETC.



CONCEPT B



CONCEPT B SECTION



CONCEPT C



CONCEPT C SECTION



13th and Gambell
 CONCEPTS B AND C ; PLANS AND SECTIONS
 SCALE, OTHER INFORMATION, ETC.