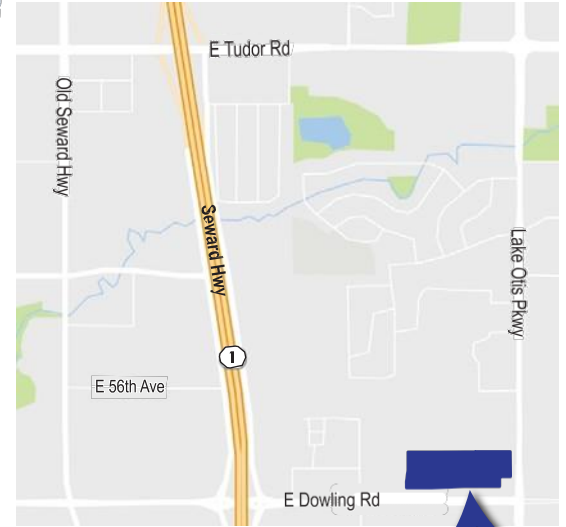


You're Invited!...

**Campbell Park Community Council
Dowling Village Subdivision
Zoning Map Amendment
Agenda Item Notification**

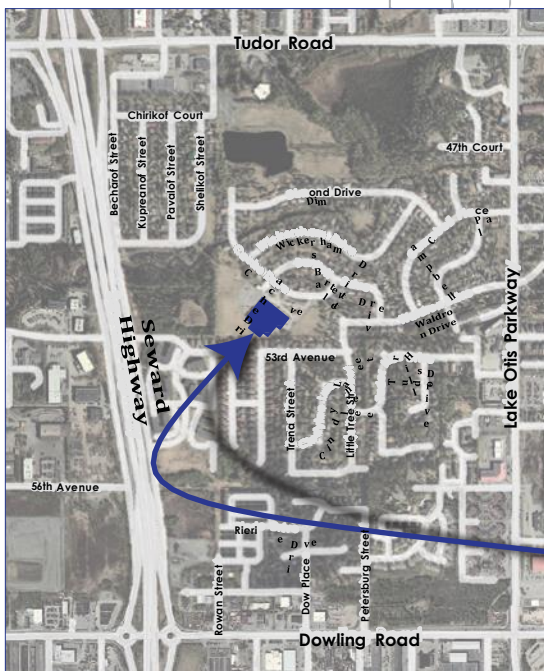
DOWL will be at the regularly scheduled Campbell Park Community Council on **THURSDAY, DECEMBER 15, 2016**, to present on a proposed Zoning Map Amendment. The project location consists of two parcels located on the northwest corner of Dowling Road, between Petersburg Road and Lake Otis Parkway.



Project Location

Thursday, December 15, 2016

**Campbell Park Community Council
Tudor Elementary School - School Library
1666 Cache Drive, Anchorage, Alaska, 99577
7:30 p.m. - 9:30 p.m.**



We welcome your feedback! There will be an opportunity to provide your comments at the meeting. You can also submit your comments or request feedback by contacting Michelle Ritter:

Michelle Ritter AICP, Senior Planner,
DOWL
4041 B Street
Anchorage, AK, 99503
(907) 562-2000
mritter@dowl.com

Meeting Location