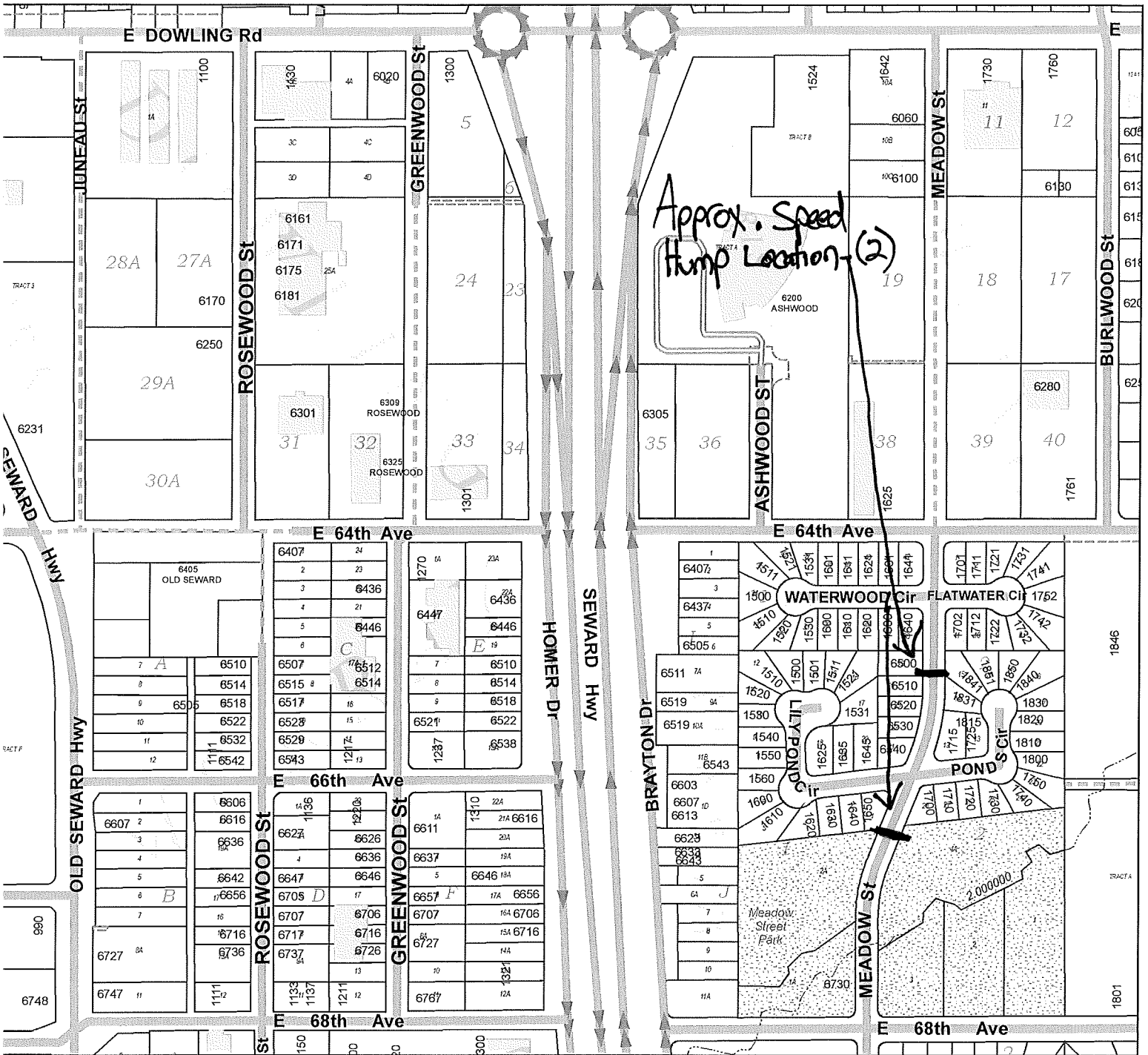


Rank	Street	Speed Humps	Justification for No Humps	Number of Humps	Estimated Cost
20	Jupiter Drive	No	Lack of Curb	N/A	N/A
26	Toloff Street	No	High Volume	N/A	N/A
28	Meadow Street	Yes	N/A	2	\$20,000
38	Claridge Place	No	Lack of Curb	N/A	N/A
43	E 84th Ave	Yes	N/A	2	\$20,000
55	Henderson Loop	Yes	N/A	2	\$20,000
88	Cathedral Place	Yes	N/A	1	\$10,000
96	E 66th Ave	Yes	N/A	4	\$40,000
96	E 72nd Ave	No	High Volume, 30mph	N/A	N/A
117	E 80th Ave	No	High Volume	N/A	N/A
127	Spruce Street	No	High Volume	N/A	N/A
128	E 88th Ave	No	High Volume	N/A	N/A



- 4819 Active Address
- Public Road
- One Way Road
- Platted/Not-Built Public Road
- Private Road
- Private Road, 4WD Access
- Driveway

- Buildings
- Parks
- Military Boundary
- Gate Preventing Through Access
- Railroad Tracks

Meadow Street



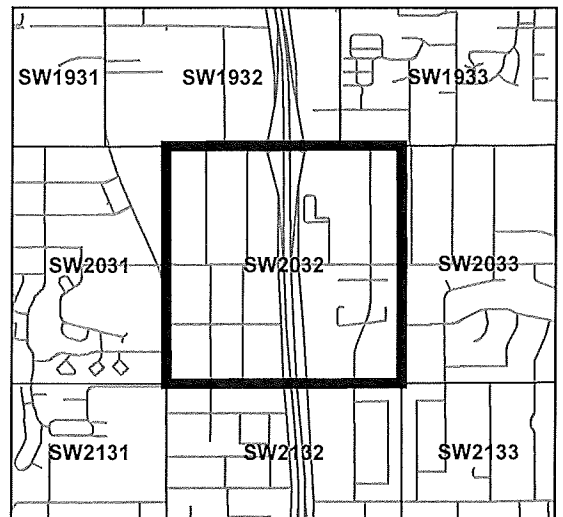
1 inch = 380 feet

Municipality of Anchorage

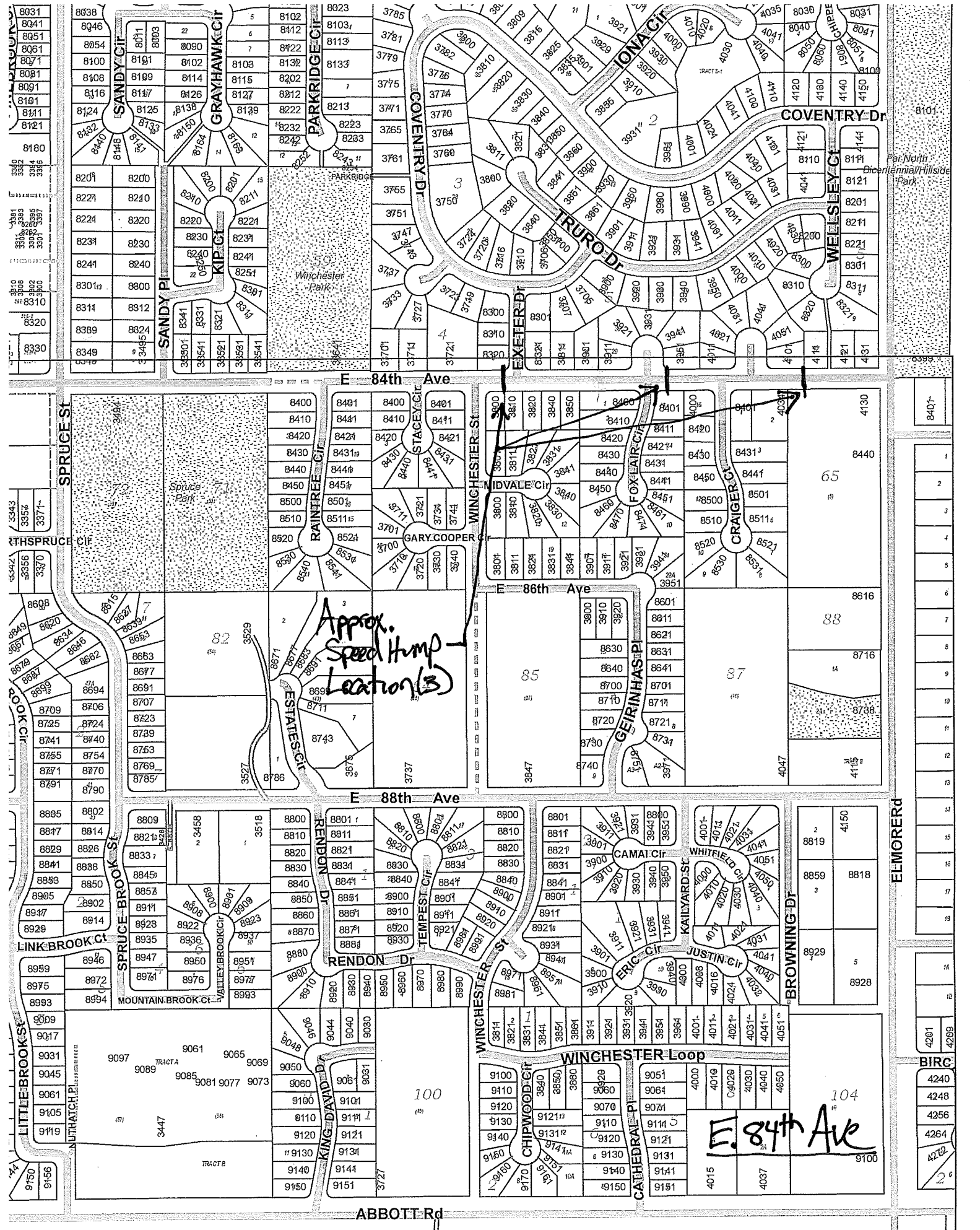
Addressing
 addressing@muni.org
 907.343.8466
 4700 Elmora Road
 P.O. Box 196650
 Anchorage, AK 99519-6650



This map is derived from Geographic Information Systems data developed and maintained by the Municipality of Anchorage (MOA). This map is not the official representation of any of the information included and is made available to the public solely for informational purposes. This map may be outdated, inaccurate and may omit important information. Do not rely on this information. The Municipality of Anchorage will not be liable for losses arising from errors, inaccuracies or omissions in the map.



Vicinity Map



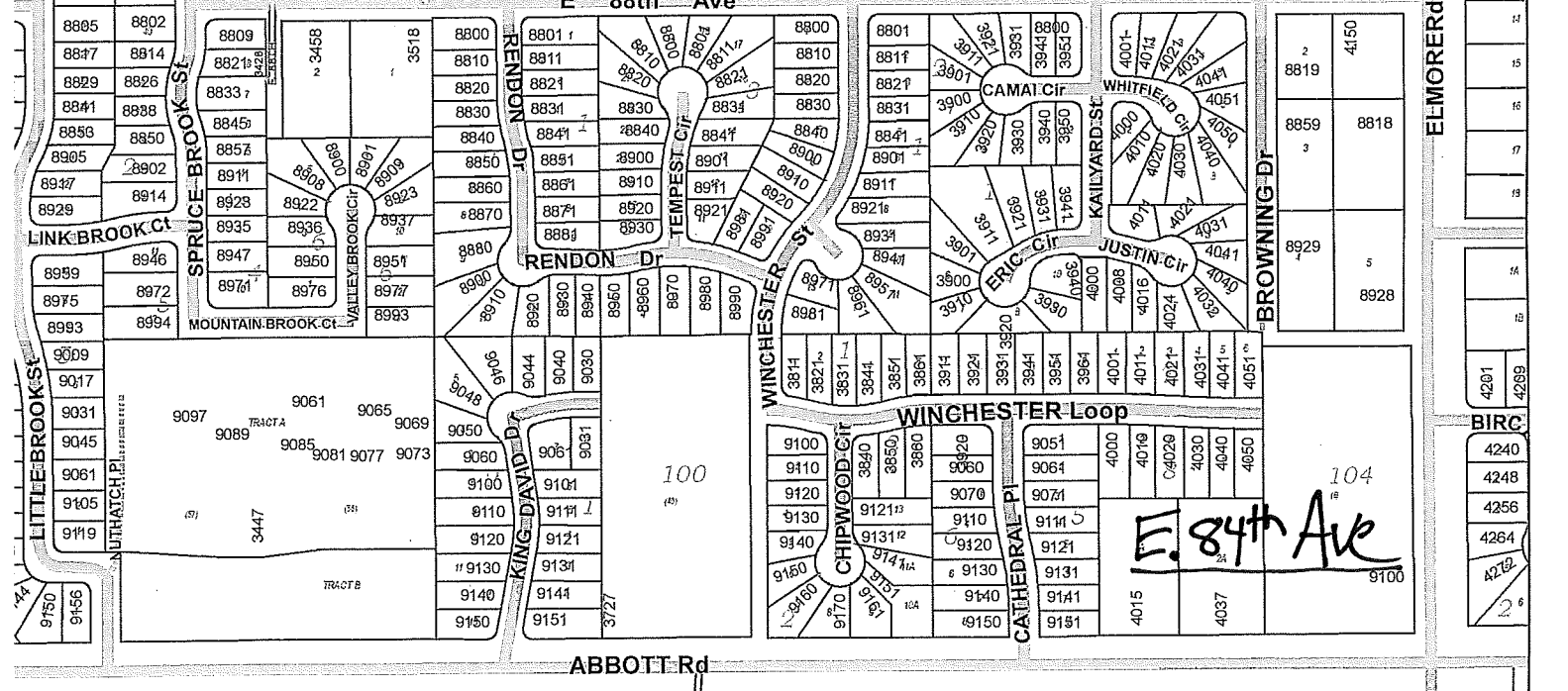
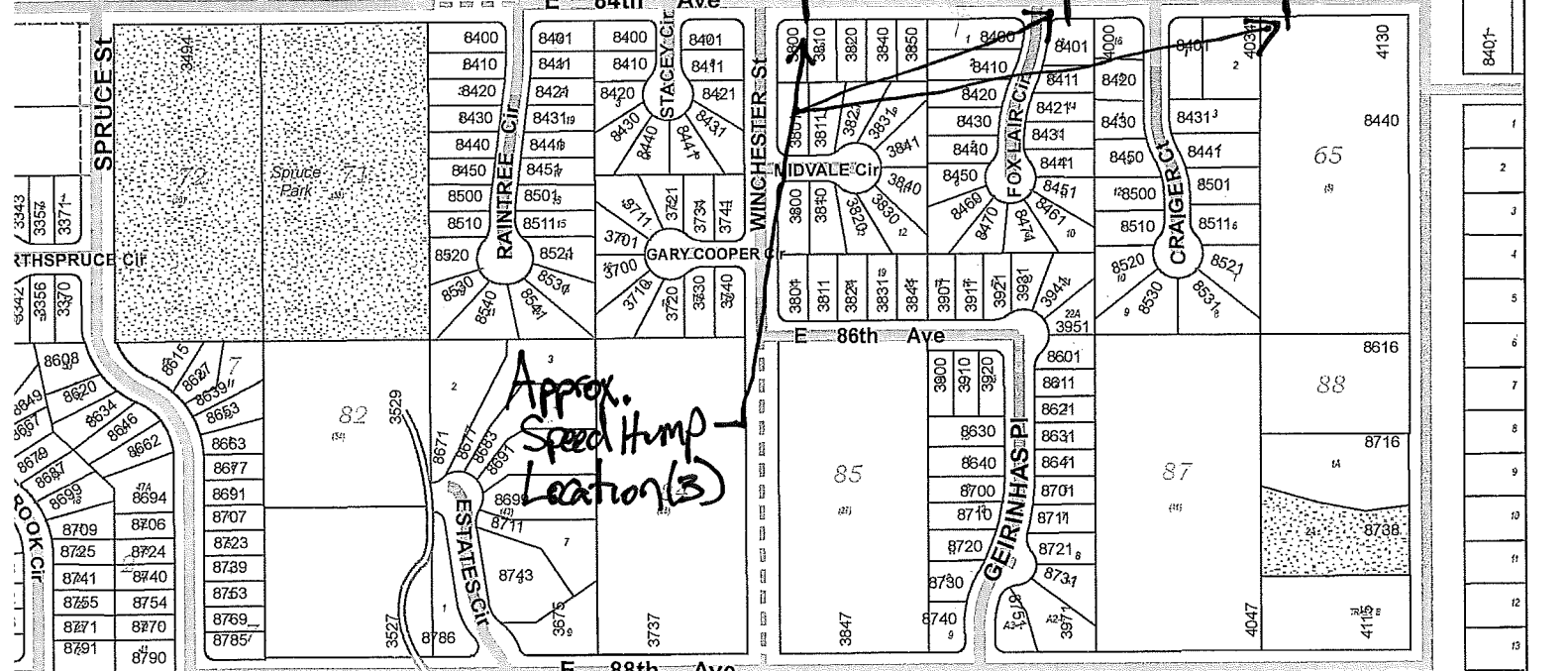
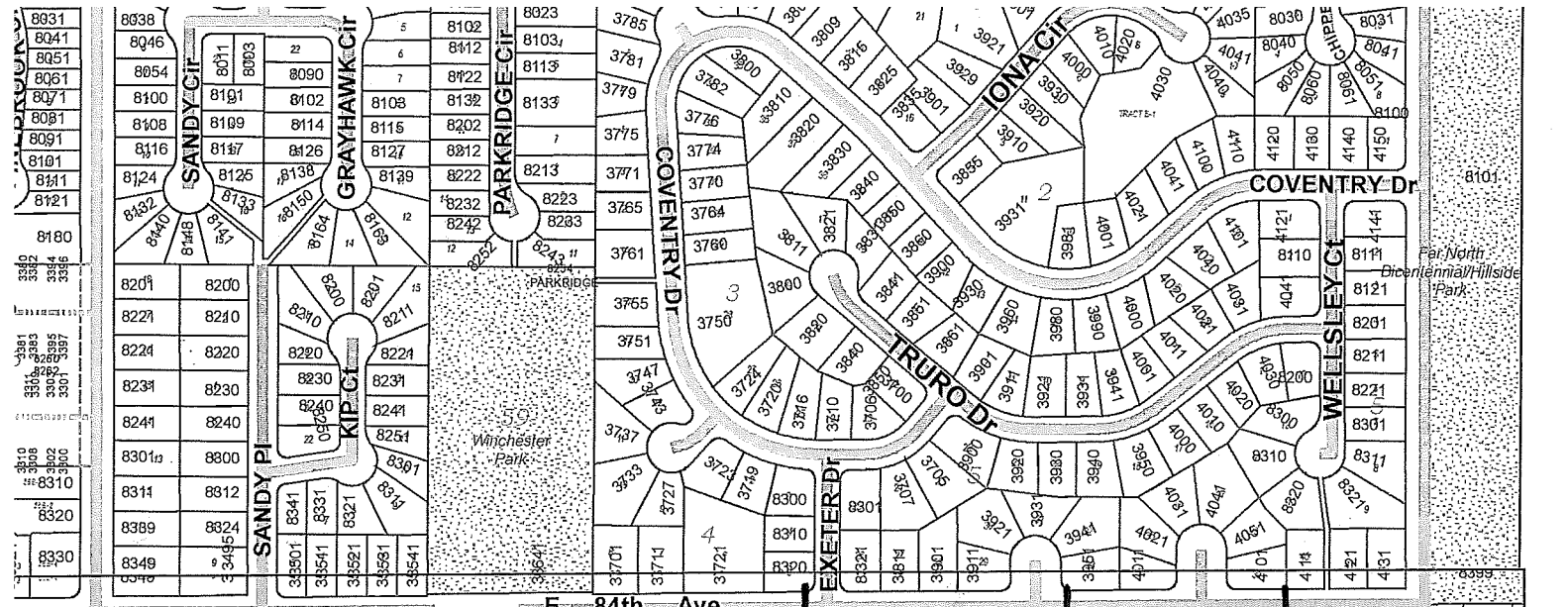
Approx.
Speed Hump
Location (3)

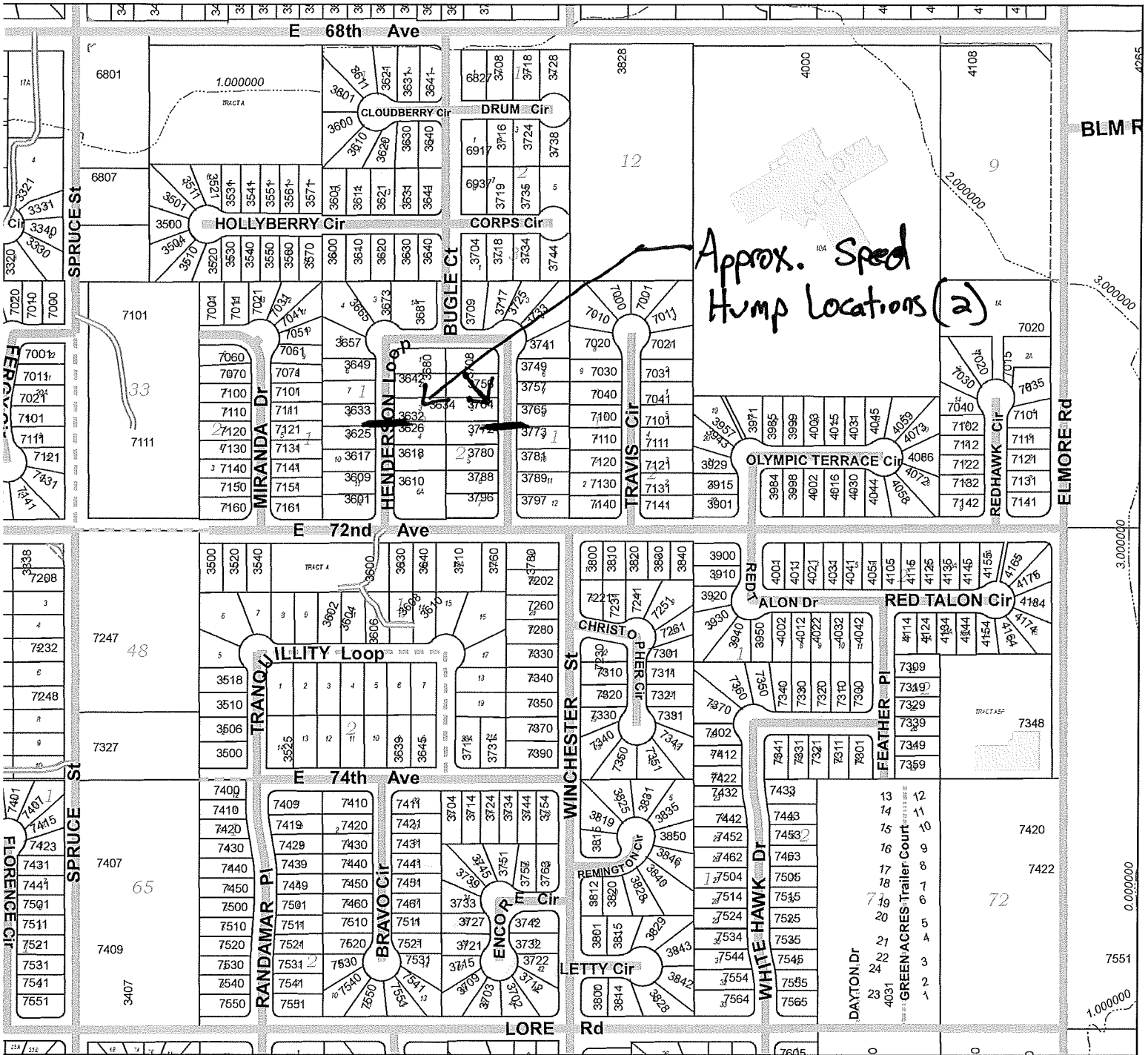
E. 84th Ave

100

104

ABBOTT Rd





- 4819 Active Address
- Public Road
- One Way Road
- Platted/Not-Built Public Road
- Private Road
- Private Road, 4WD Access
- Driveway

- Buildings
- Parks
- Military Boundary
- Gate Preventing Through Access
- Railroad Tracks

Henderson Loop



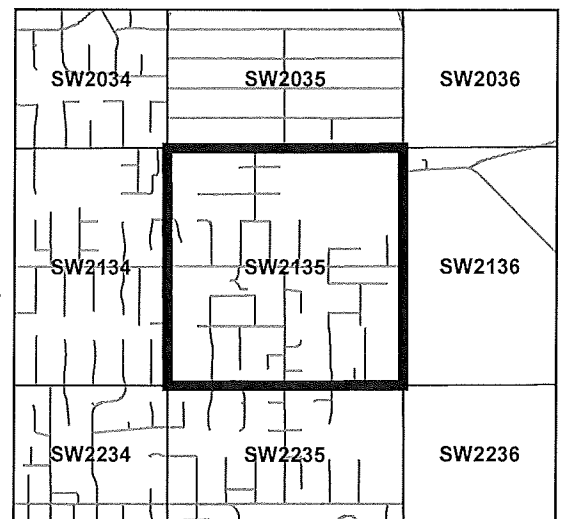
1 inch = 380 feet

Municipality of Anchorage

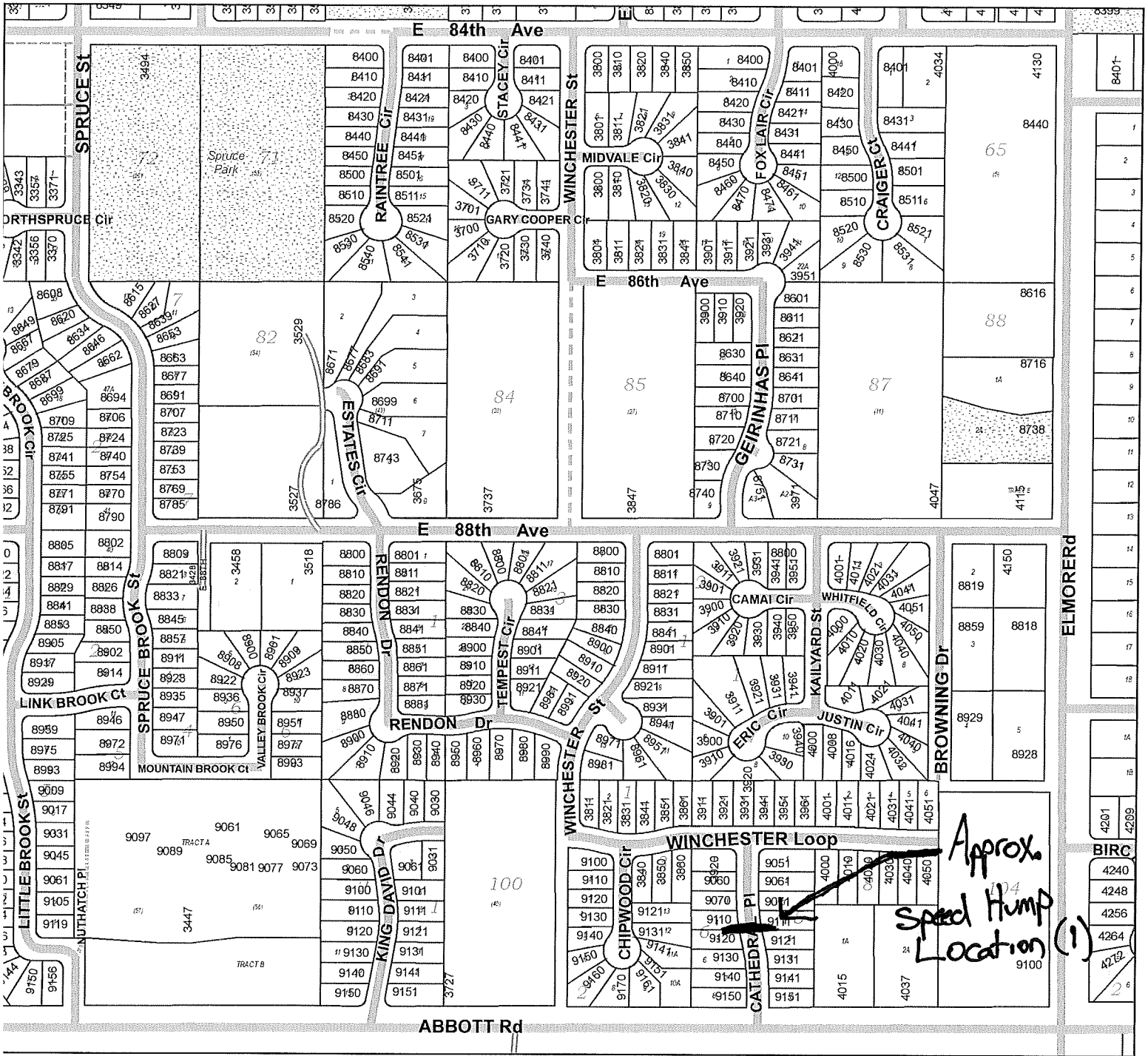
Addressing
 addressing@muni.org
 907.343.8466
 4700 Elmore Road
 P.O. Box 196650
 Anchorage, AK 99519-6650



This map is derived from Geographic Information Systems data developed and maintained by the Municipality of Anchorage(MOA). This map is not the official representation of any of the information included and is made available to the public solely for informational purposes. This map may be outdated, inaccurate and may omit important information. Do not rely on this information. The Municipality of Anchorage will not be liable for losses arising from errors, inaccuracies or omissions in the map.



Vicinity Map



- 4819 Active Address
- Public Road
- One Way Road
- Platted/Not-Built Public Road
- Private Road
- Private Road, 4WD Access
- Driveway

- Buildings
- Parks
- Military Boundary
- Gate Preventing Through Access
- Railroad Tracks

Cathedral Place

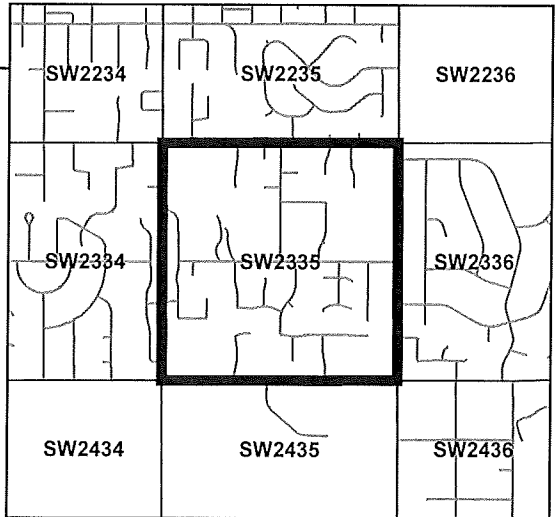


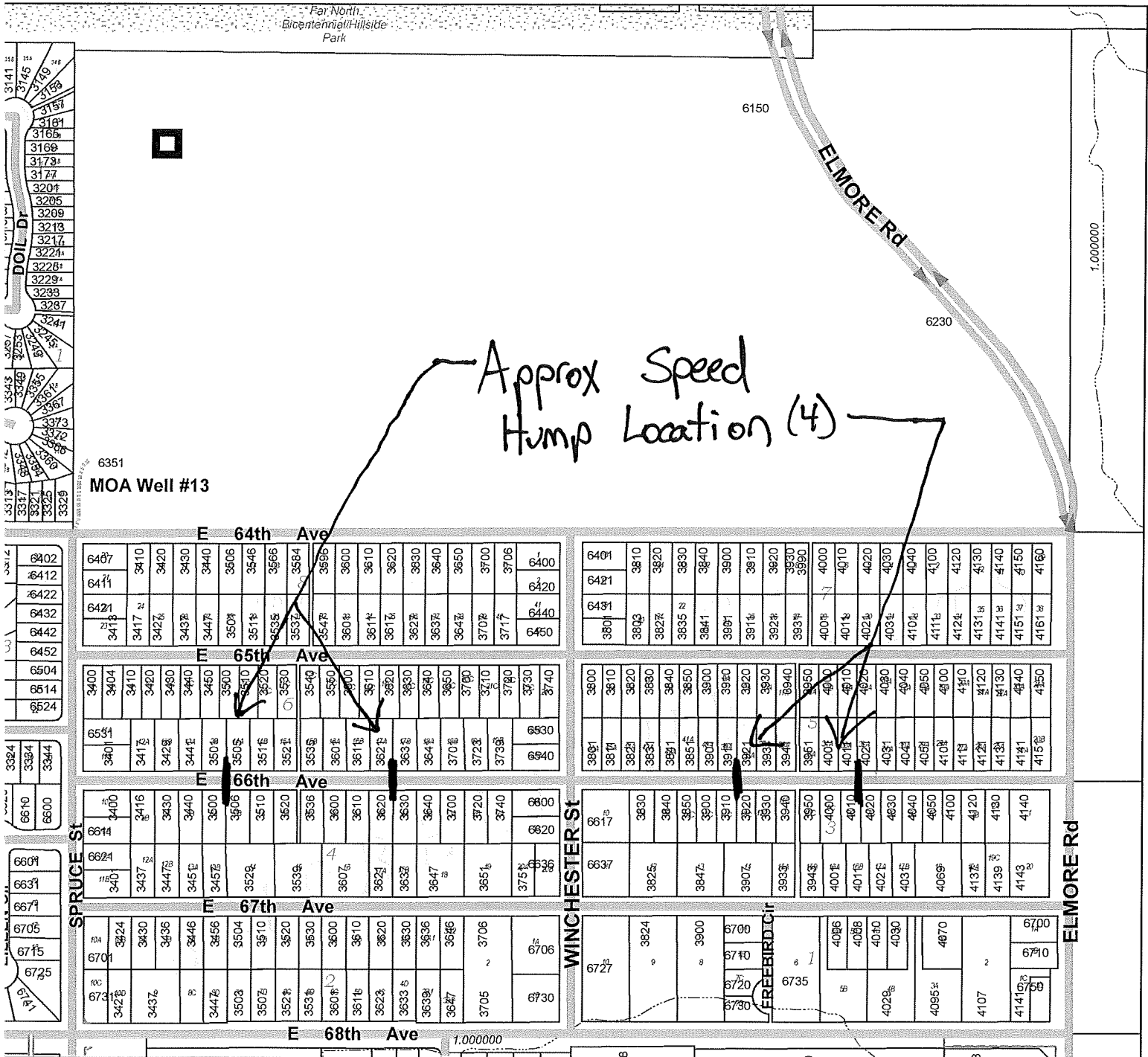
1 inch = 380 feet

Municipality of Anchorage
 Addressing
 addressing@muni.org
 907.343.8466
 4700 Elmore Road
 P.O. Box 196650
 Anchorage, AK 99519-6650



This map is derived from Geographic Information Systems data developed and maintained by the Municipality of Anchorage (MOA). This map is not the official representation of any of the information included and is made available to the public solely for informational purposes. This map may be outdated, inaccurate and may omit important information. Do not rely on this information. The Municipality of Anchorage will not be liable for losses arising from errors, inaccuracies or omissions in the map.





- 4819 Active Address
- Public Road
- One Way Road
- Platted/Not-Built Public Road
- Private Road
- Private Road, 4WD Access
- Driveway

- Buildings
- Parks
- Military Boundary
- Gate Preventing Through Access
- Railroad Tracks

E. 66th Ave



1 inch = 380 feet

Municipality of Anchorage

Addressing
 addressing@muni.org
 907.343.8466
 4700 Elmore Road
 P.O. Box 196650
 Anchorage, AK 99519-6650



This map is derived from Geographic Information Systems data developed and maintained by the Municipality of Anchorage (MOA). This map is not the official representation of any of the information included and is made available to the public solely for informational purposes. This map may be outdated, inaccurate and may omit important information. Do not rely on this information. The Municipality of Anchorage will not be liable for losses arising from errors, inaccuracies or omissions in the map.