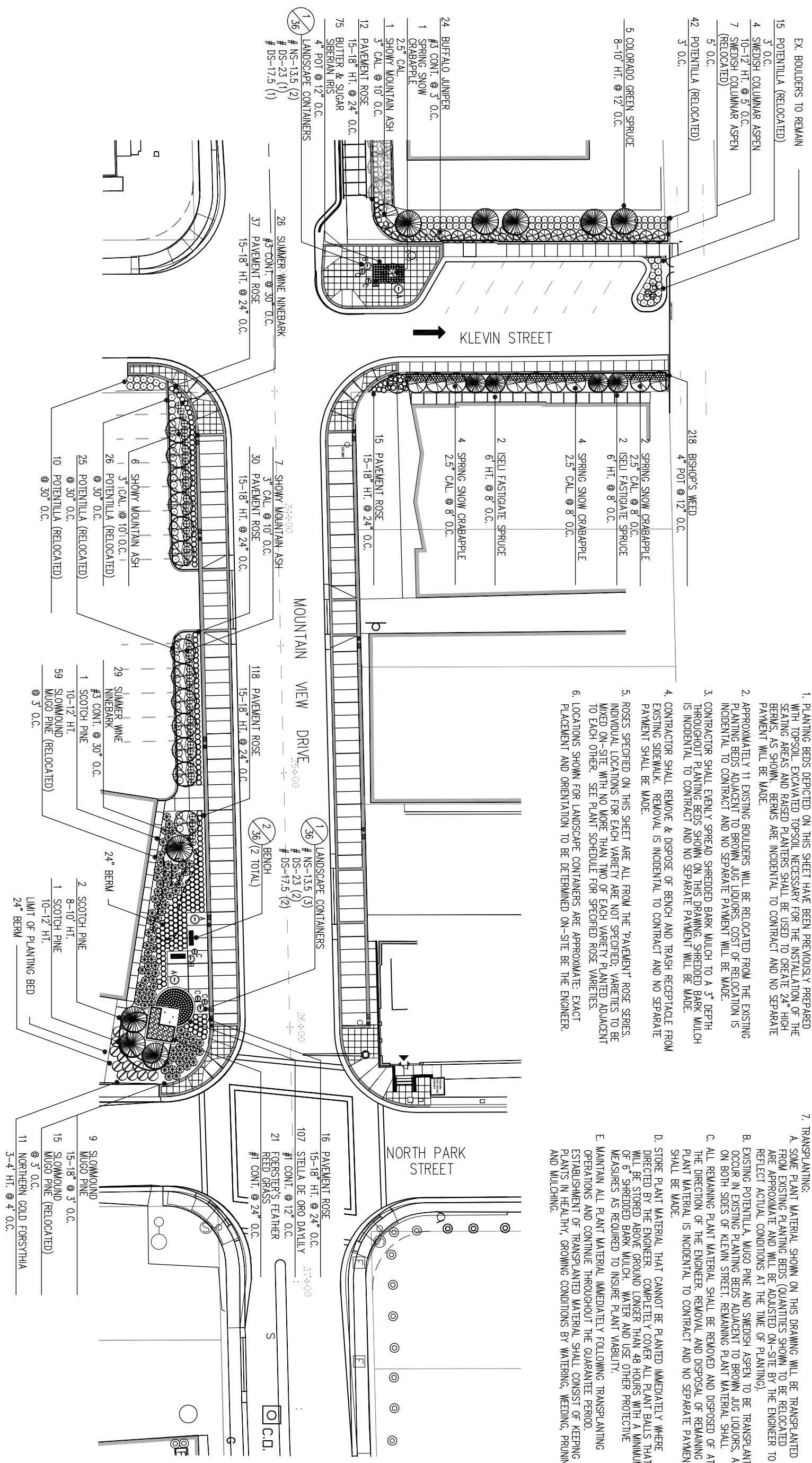
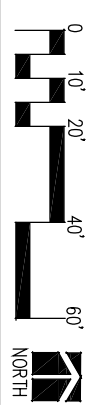


PLANTING NOTES / THIS SHEET

1. PLANTING BEDS DEPICTED ON THIS SHEET HAVE BEEN PREVIOUSLY PREPARED WITH TOPSOIL. EXCAVATED TOPSOIL NECESSARY FOR THE INSTALLATION OF THE SEATING AREAS AND RAISED PLANTERS SHALL BE USED TO CREATE 24" HIGH BERMS. AS SHOWN, BERMS ARE INCIDENTAL TO CONTRACT AND NO SEPARATE PAYMENT WILL BE MADE.
2. APPROXIMATELY 11 EXISTING BOULDERS WILL BE RELOCATED FROM THE EXISTING PLANTING BEDS ADJACENT TO BROWN JUG LIQUORS. COST OF RELOCATION IS INCIDENTAL TO CONTRACT AND NO SEPARATE PAYMENT WILL BE MADE.
3. CONTRACTOR SHALL EVENLY SPREAD SHREDED BARK MULCH TO A 3" DEPTH THROUGHOUT PLANTING BEDS SHOWN ON THIS DRAWING. SHREDED BARK MULCH IS INCIDENTAL TO CONTRACT AND NO SEPARATE PAYMENT WILL BE MADE.
4. CONTRACTOR SHALL REMOVE & DISPOSE OF BENCH AND TRASH RECEPTACLE FROM EXISTING SIDEWALK. REMOVAL IS INCIDENTAL TO CONTRACT AND NO SEPARATE PAYMENT SHALL BE MADE.
5. ROSES SPECIFIED ON THIS SHEET ARE ALL FROM THE 'PAVEMENT' ROSE SERIES. INDIVIDUAL LOCATIONS FOR EACH VARIETY ARE NOT SPECIFIED. VARIETIES TO BE MIXED ON-SITE WITH NO MORE THAN TWO OF EACH VARIETY PLANTED ADJACENT TO EACH OTHER. SEE PLANT SCHEDULE FOR SPECIFIED ROSE VARIETIES.
6. LOCATIONS SHOWN FOR LANDSCAPE CONTAINERS ARE APPROXIMATE. EXACT PLACEMENT AND ORIENTATION TO BE DETERMINED ON-SITE BY THE ENGINEER.
7. TRANSPLANTING:
 - A. SOME PLANT MATERIAL SHOWN ON THIS DRAWING WILL BE TRANSPLANTED FROM EXISTING PLANTING BEDS (QUANTITIES SHOWN TO BE RELOCATED ARE APPROXIMATE AND WILL BE ADJUSTED ON-SITE BY THE ENGINEER TO REFLECT ACTUAL CONDITIONS AT THE TIME OF PLANTING).
 - B. EXISTING POTENTILLA, MUGO PINE AND SWEDISH ASPEN TO BE TRANSPLANTED OCCUR IN EXISTING PLANTING BEDS ADJACENT TO BROWN JUG LIQUORS, AND ON BOTH SIDES OF KLEVIN STREET. REMAINING PLANT MATERIAL SHALL
 - C. ALL REMAINING PLANT MATERIAL SHALL BE REMOVED AND DISPOSED OF AT THE DIRECTION OF THE ENGINEER. REMOVAL AND DISPOSAL OF REMAINING PLANT MATERIAL IS INCIDENTAL TO CONTRACT AND NO SEPARATE PAYMENT SHALL BE MADE.
 - D. STORE PLANT MATERIAL THAT CANNOT BE PLANTED IMMEDIATELY WHERE DIRECTED BY THE ENGINEER. COMPLETELY COVER ALL PLANT BALLS THAT WILL BE STORED ABOVE GROUND LONGER THAN 48 HOURS WITH A MINIMUM OF 6" SHREDED BARK MULCH, WATER AND USE OTHER PROTECTIVE MEASURES AS REQUIRED TO INSURE PLANT VIABILITY.
 - E. MAINTAIN ALL PLANT MATERIAL IMMEDIATELY FOLLOWING TRANSPLANTING OPERATIONS AND CONTINUE THROUGHOUT THE GUARANTEE PERIOD. ESTABLISHMENT OF TRANSPLANTED MATERIAL SHALL CONSIST OF KEEPING PLANTS IN HEALTHY, GROWING CONDITIONS BY WATERING, WEEDING, PRUNING AND MULCHING.



PLANTING PLAN / KLEVIN STREET TO NORTH PARK STREET
SCALE: 1" = 20'-0"



			PROJECT MANAGEMENT AND ENGINEERING DEPARTMENT
			03-17 MOUNTAIN VIEW DRIVE RECONSTRUCTION SCHEDULE A PHASE 3 LANDSCAPE PLAN KLEVIN STREET TO NORTH PARK STREET
SCALE: AS NOTED	DATE: 5/2007	GRD: SW 1136	SHEET 38 of 52