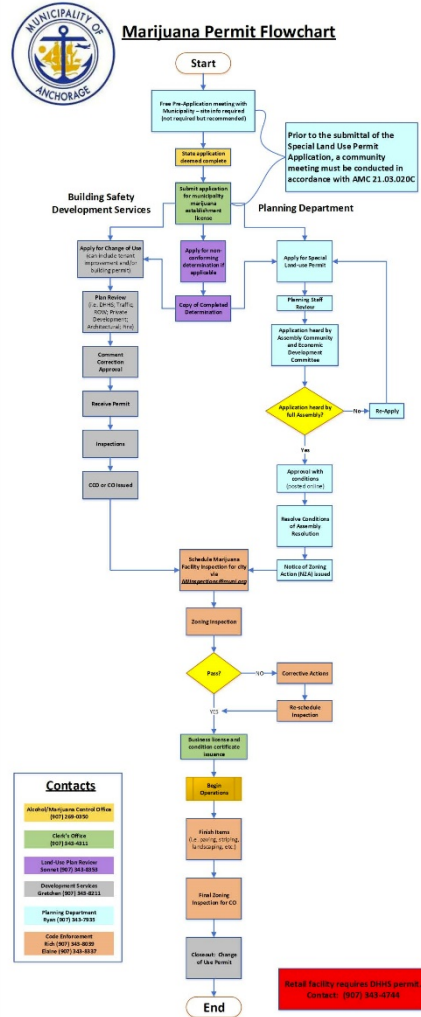


Status of Marijuana Facilities within the Municipality of Anchorage

Ryan Yelle, Associate Planner
Current Planning Division
Planning Department

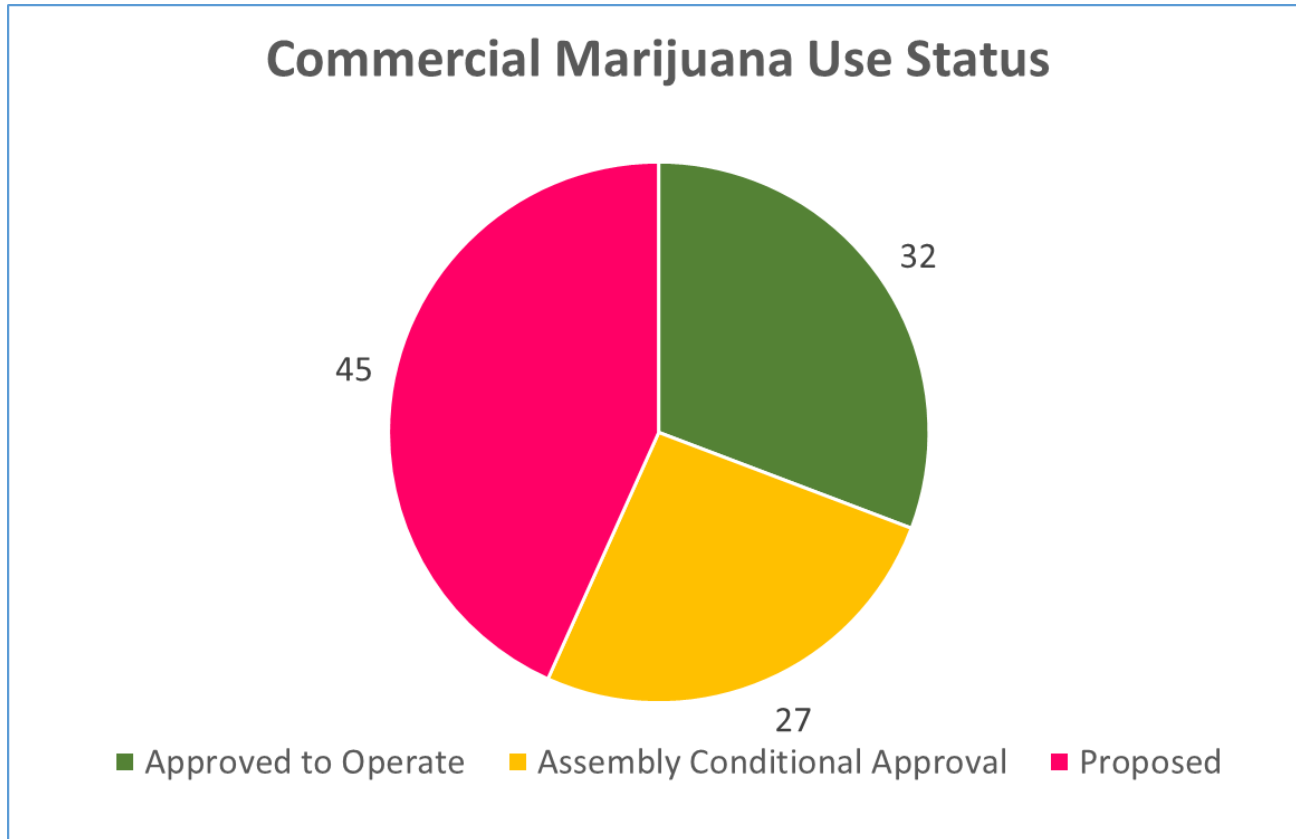
September 20th, 2017

Marijuana Licensing/SLUP Process



- Special Land Use Permit (SLUP) application cannot be accepted until the state has deemed their state application complete
- Planning staff conducts a review of the application and provides a report to the Assembly
- Assembly approves or denies the application (to date, no denials)
- If approved, the applicant must satisfy the conditions of the Assembly Resolution
- Applicant can begin operations once a final inspection is passed, and both the Marijuana License and Conditions Certificate are issued.

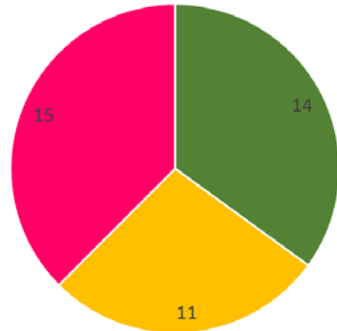
Status of Marijuana Facilities



- Currently 104 total facilities within the MOA in various stages
- Those Approved to Operate include 14 retail, 4 manufacturing, 12 cultivation, and 2 testing facilities.

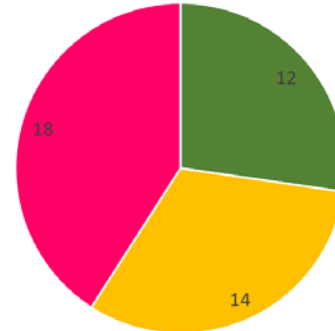
Status of Marijuana Facilities by Use

Marijuana Retail Sales Establishments



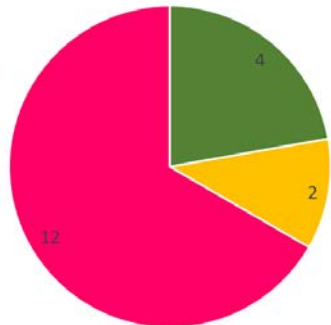
■ Approved to Operate ■ Assembly Conditional Approval ■ Proposed

Marijuana Cultivation Facilities



■ Approved to Operate ■ Assembly Conditional Approval ■ Proposed

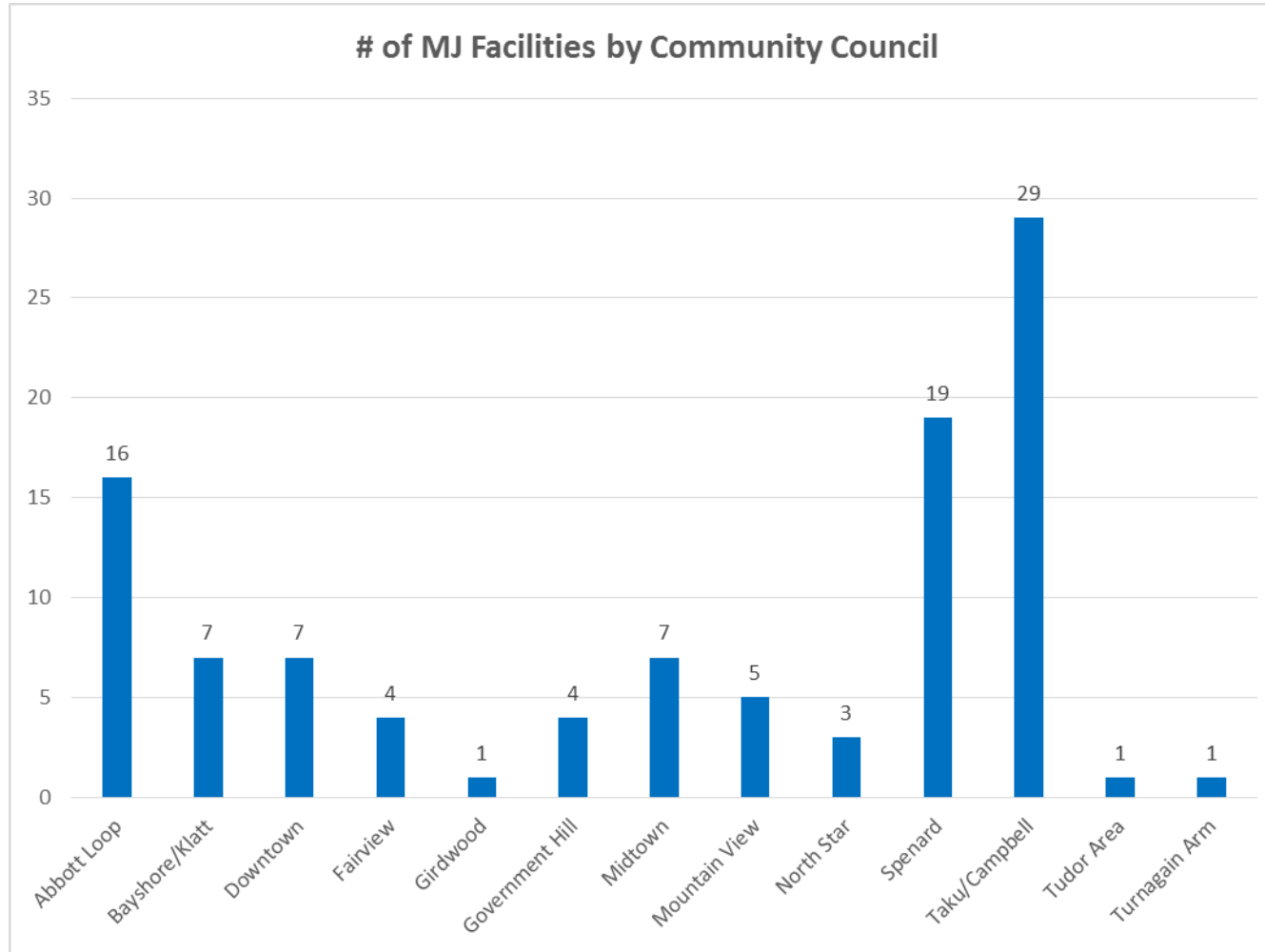
Marijuana Manufacturing Facilities



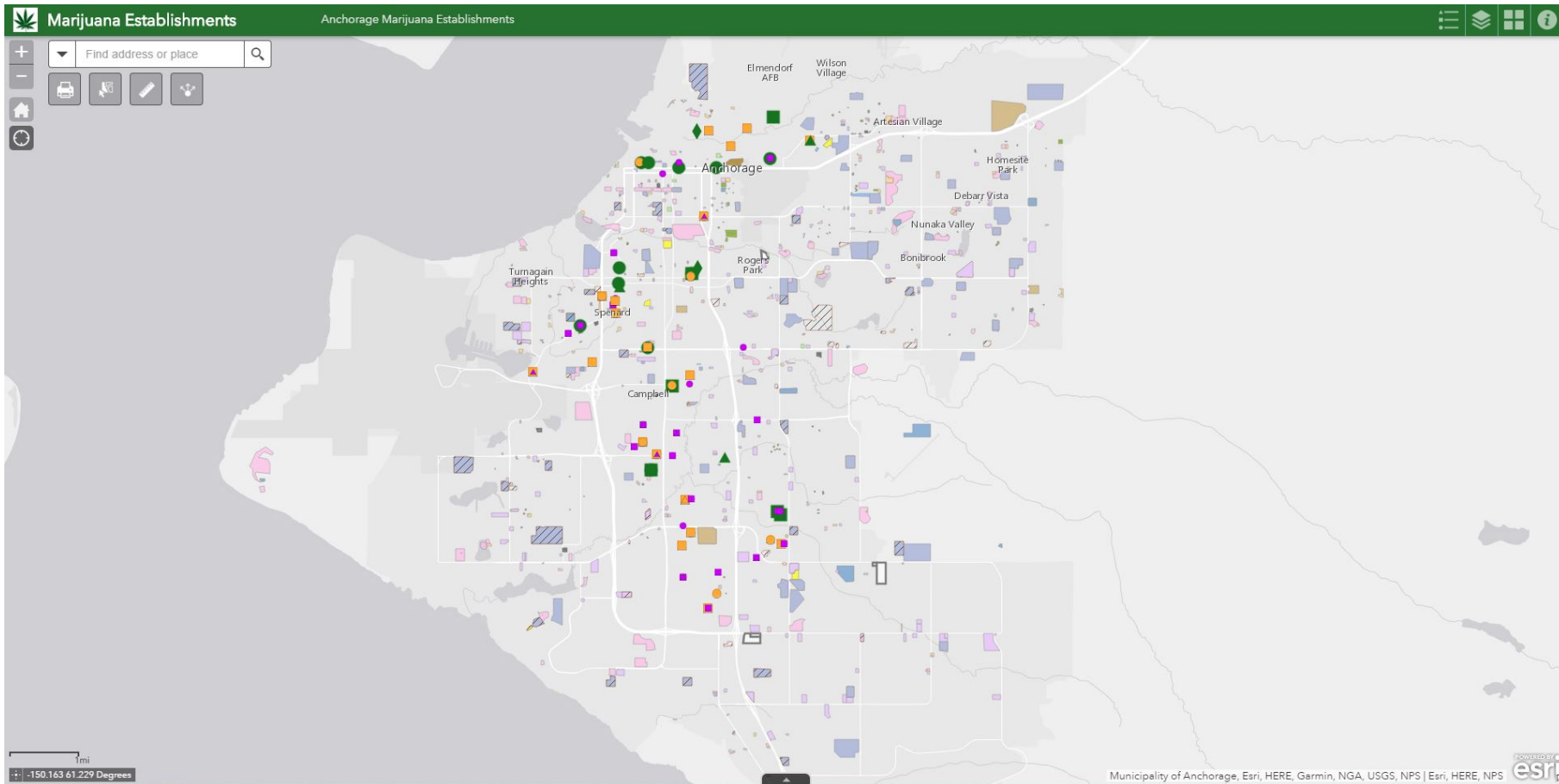
■ Approved to Operate ■ Assembly Conditional Approval ■ Proposed

- 2 Marijuana Testing Facilities are approved to operate. No additional testing facilities are proposed within the MOA.

Marijuana Facilities by Community Council



Marijuana Establishments Map



Found on: [Muni.org](#) → Maps → Marijuana Establishments

Contact Info

Ryan Yelle

Associate Planner

Current Planning Division

Planning Department

PH# 343-7935

YelleRJ@muni.org