

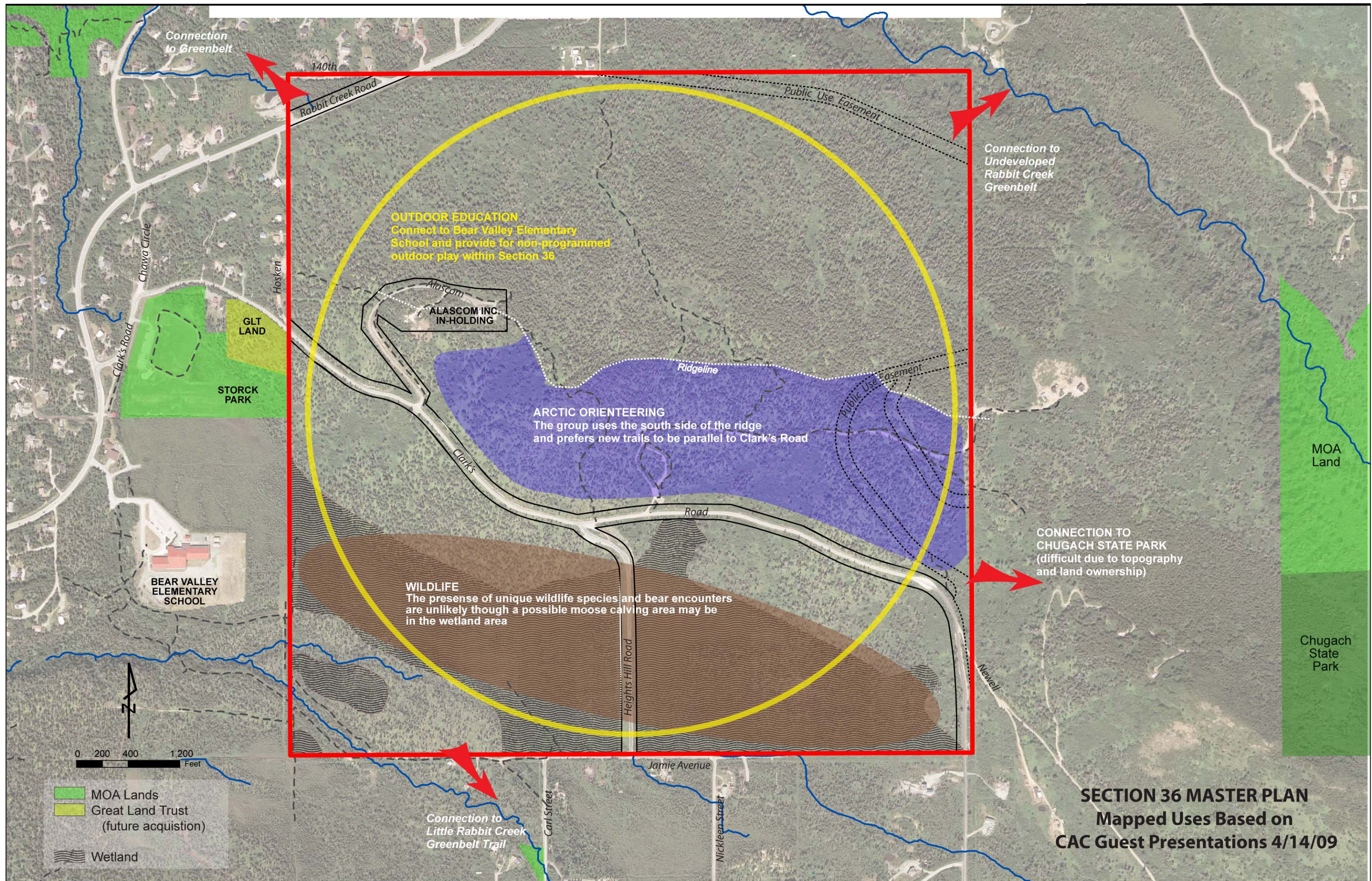
SECTION 36



PARK MASTER PLAN

CITIZENS ADVISORY COMMITTEE
PROGRAM AND CONCEPT NOTES

This .pdf file contains an image which mapped the uses from the CAC guest presentations in April and additional comments from the Rabbit Creek Community Council.



OUTDOOR EDUCATION
 Connect to Bear Valley Elementary School and provide for non-programmed outdoor play within Section 36

Alascom
ALASCOM INC. IN-HOLDING

ARCTIC ORIENTEERING
 The group uses the south side of the ridge and prefers new trails to be parallel to Clark's Road

WILDLIFE
 The presence of unique wildlife species and bear encounters are unlikely though a possible moose calving area may be in the wetland area

Connection to Undeveloped Rabbit Creek Greenbelt

CONNECTION TO CHUGACH STATE PARK (difficult due to topography and land ownership)

Connection to Little Rabbit Creek Greenbelt Trail

SECTION 36 MASTER PLAN
Mapped Uses Based on
CAC Guest Presentations 4/14/09

- MOA Lands
- Great Land Trust (future acquisition)
- Wetland

Hi Susan,

The Rabbit Creek Community Council meeting brought out some interesting comments and ideas. Also there were some folks who followed up after the meeting and here are those thoughts.

1. There were horse people there that would like to see a trail or trails that can be used by the local horse community. It was sort of sad in that they don't think there is any chance for horse use.
2. X-country trails on the North need to be wider than what is on the Trail Design Parameter map to accommodate groomers.
3. A chalet or warm up area on the North side near the RC Rd parking area. There was strong interest for Jr. Nordic skiing and having a staging area (chalet) for that. A Clark's Rd chalet was not a good place because of access and neighborhood disruption issues (lighting, traffic, bad steep road, no shoulders). The RC Rd parking area N,NW corner was looked at for a chalet as BV school could be used for the SW parking, educational component, boardwalk near the school would polish the ADA component.
4. Potential lighting for trails and the chalet on the North side would be less intrusive to Bear Valley.
5. There is a potential connection to the existing RC Greenbelt trail to come up parallel to Old Rabbit Creek Rd than continue on the DOT right of way known as Chawwa Circle (it is aligned with Old Rabbit Creek Rd.). Make sure that ROW doesn't disappear as it could be a connection.
6. There was strong support for trails from BV school to loop to Storck Park that can be used for X-country skiing, hiking, connect to Sec. 36. Comments about expense to boardwalk across wetlands but a favorable response if money was available.
7. A strong request for a bid ready project or \$ from master plan to start a project.
8. There was also a request to keep it wild, minimal development and no lighting.
9. Sue Rodman from AFD, Firewise asked if it is possible for folks to go in and collect firewood from the dead fall. (Personally, I would not want this until fire season is well past).
10. Will there be Mt. bike trails? Would like.
11. Do not name "Clarke Park"
12. Keep wild, don't build anything just walking paths.
13. Develop like Kincaid without the soccer fields but a network ski trails.

There was confusion about the maps and what the arrows meant and the types of facilities. Folks were reluctant to draw on the maps because they didn't want to choose a design that wasn't clear so I condensed what I was told. There was a definite desire to see some type of facility in the way of a small chalet for ski clubs or out door programs in the area. There were about 25 people in attendance. About 10 spoke with me.

I hope this is helpful and gives you some different design approaches.