

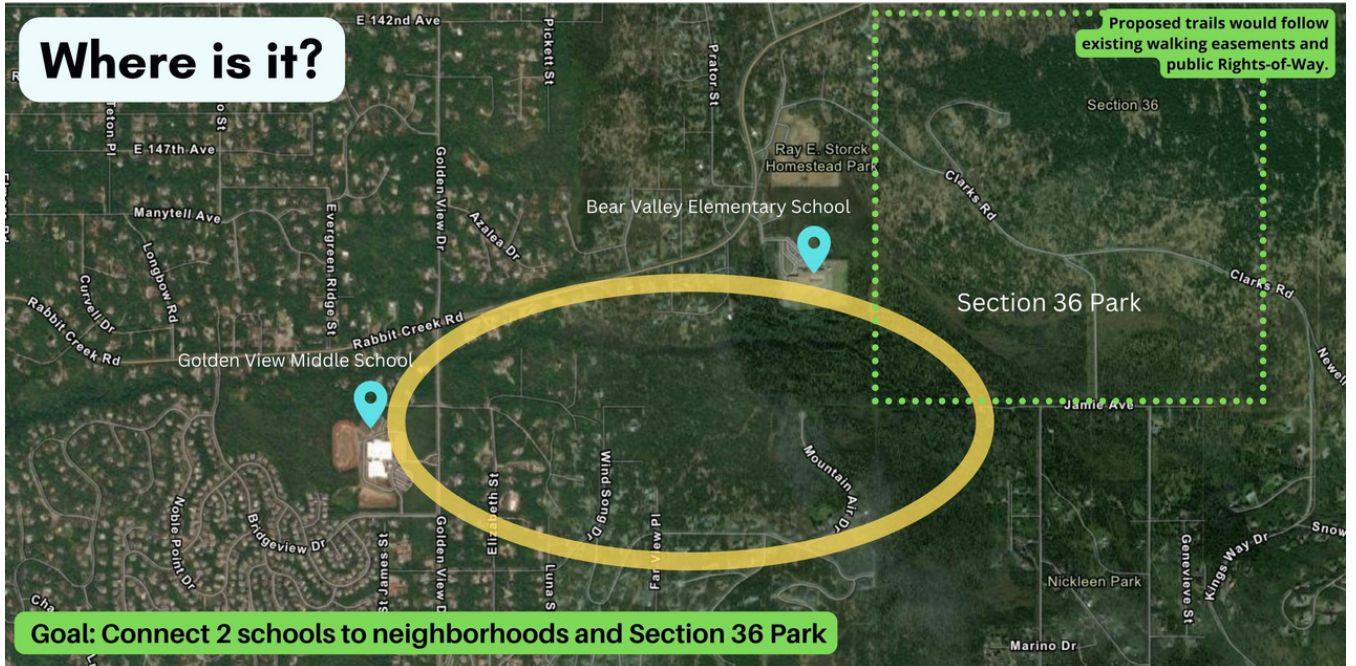


What is it?

- o **Schools on Trails** is a community-led initiative to evaluate, design, fund, and construct approximately 1.5 to 2 miles of unpaved, rustic trails that will allow walking and biking to Bear Valley School, Goldenview School, and Section 36 Park from surrounding neighborhoods.

Why do we need it?

- o **Bear Valley Elementary School** has no safe walking routes to school. It is one of only two schools in the Municipality where every child must be bused or driven.
- o **Safe access to schools** is a goal of the Anchorage School District and municipal transportation plans.
- o **Trails and pathways** make neighborhoods better. They increase property values, reduce vehicle congestion at intersections and parking areas, and boost physical and mental health.



What's next?

