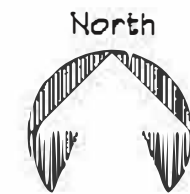


NOTE: BASE MAP DRAWN FROM GOOGLE EARTH IMAGE.
ALL DIMENSIONS ARE APPROXIMATE.



GRAPHIC SCALE
NTS



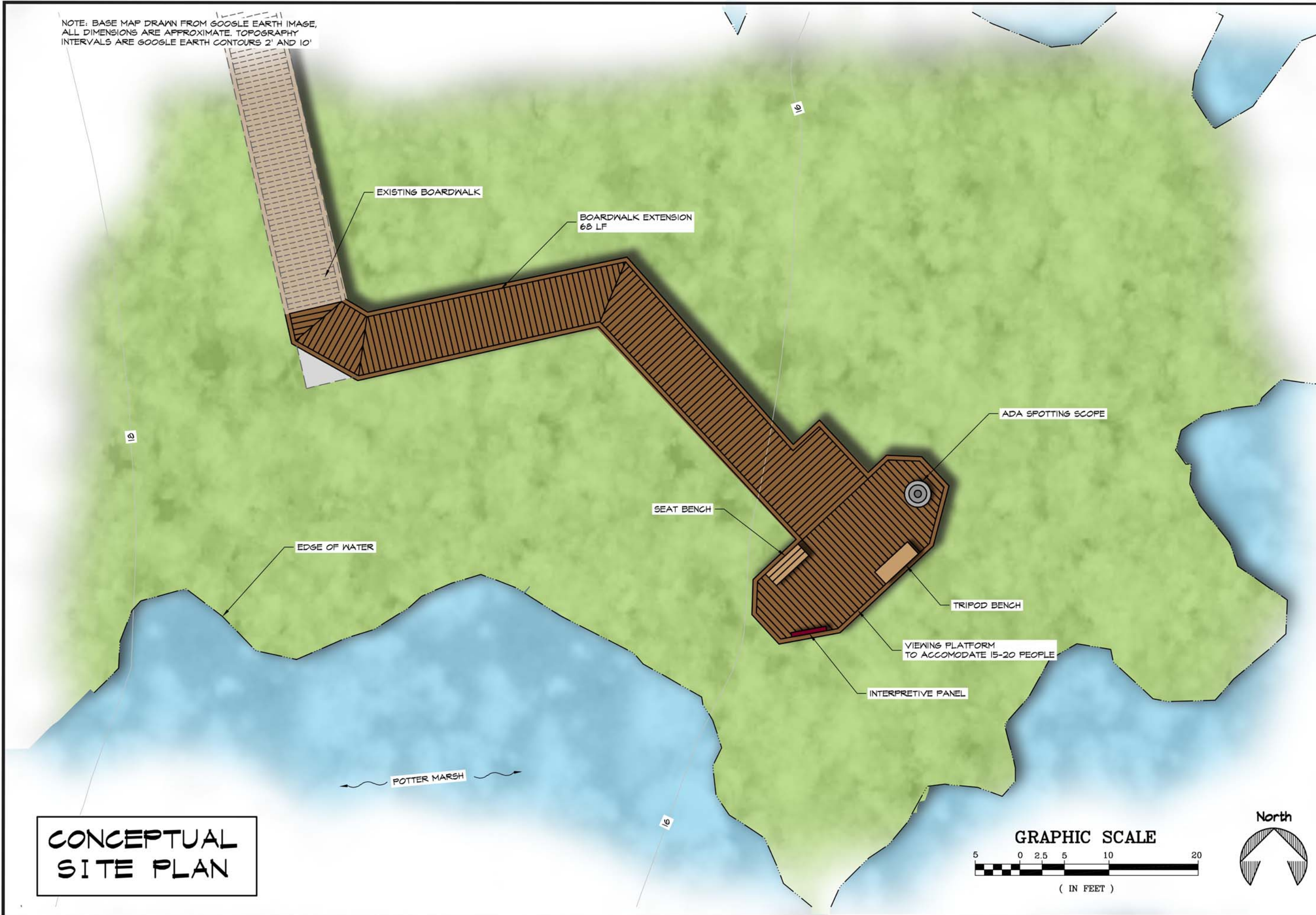
PREPARED: LER
DRAWN: LER
REVIEWED: LR
DATE: 06/08/2014

SHEET

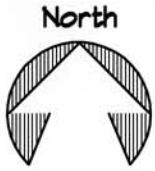
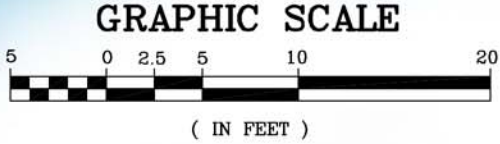
0

OF 06 SHEETS

NOTE: BASE MAP DRAWN FROM GOOGLE EARTH IMAGE, ALL DIMENSIONS ARE APPROXIMATE. TOPOGRAPHY INTERVALS ARE GOOGLE EARTH CONTOURS 2' AND 10'



**CONCEPTUAL
SITE PLAN**



STATE OF ALASKA DEPARTMENT OF NATURAL RESOURCES

ACWR: POTTER MARSH
SITE IMPROVEMENTS
PROJECT NO. 74150-1

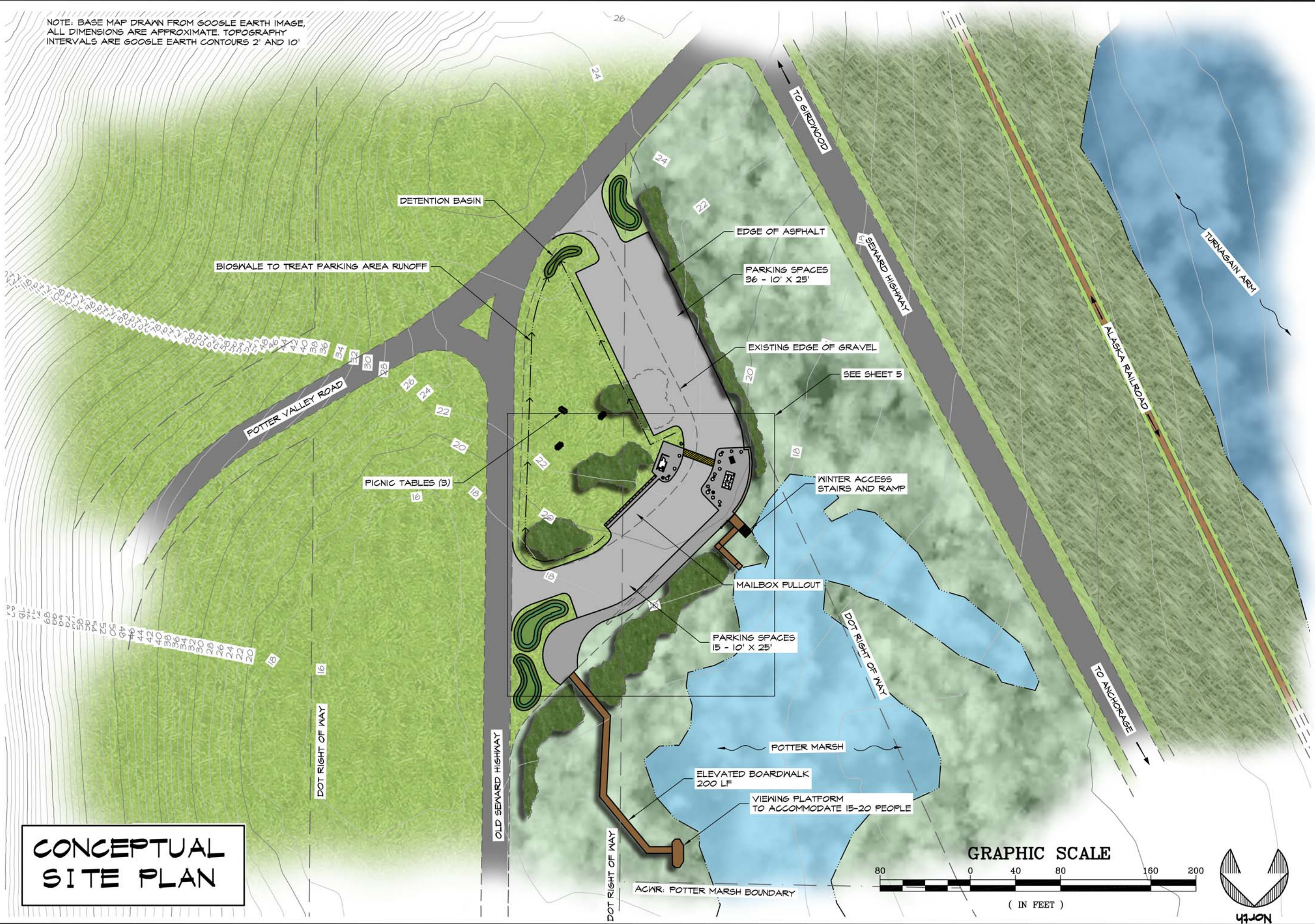
TERMINUS OF OLD BOARDWALK
CONCEPTUAL PLAN



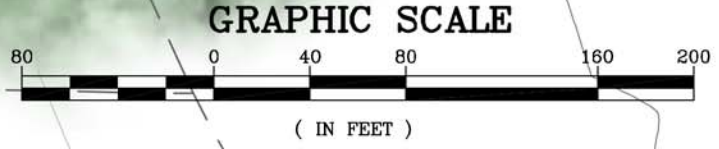
PREPARED: LEB
DRAWN: LEB
REVIEWED: LR
DATE: 06/06/2014

SHEET
1
OF 05 SHEETS

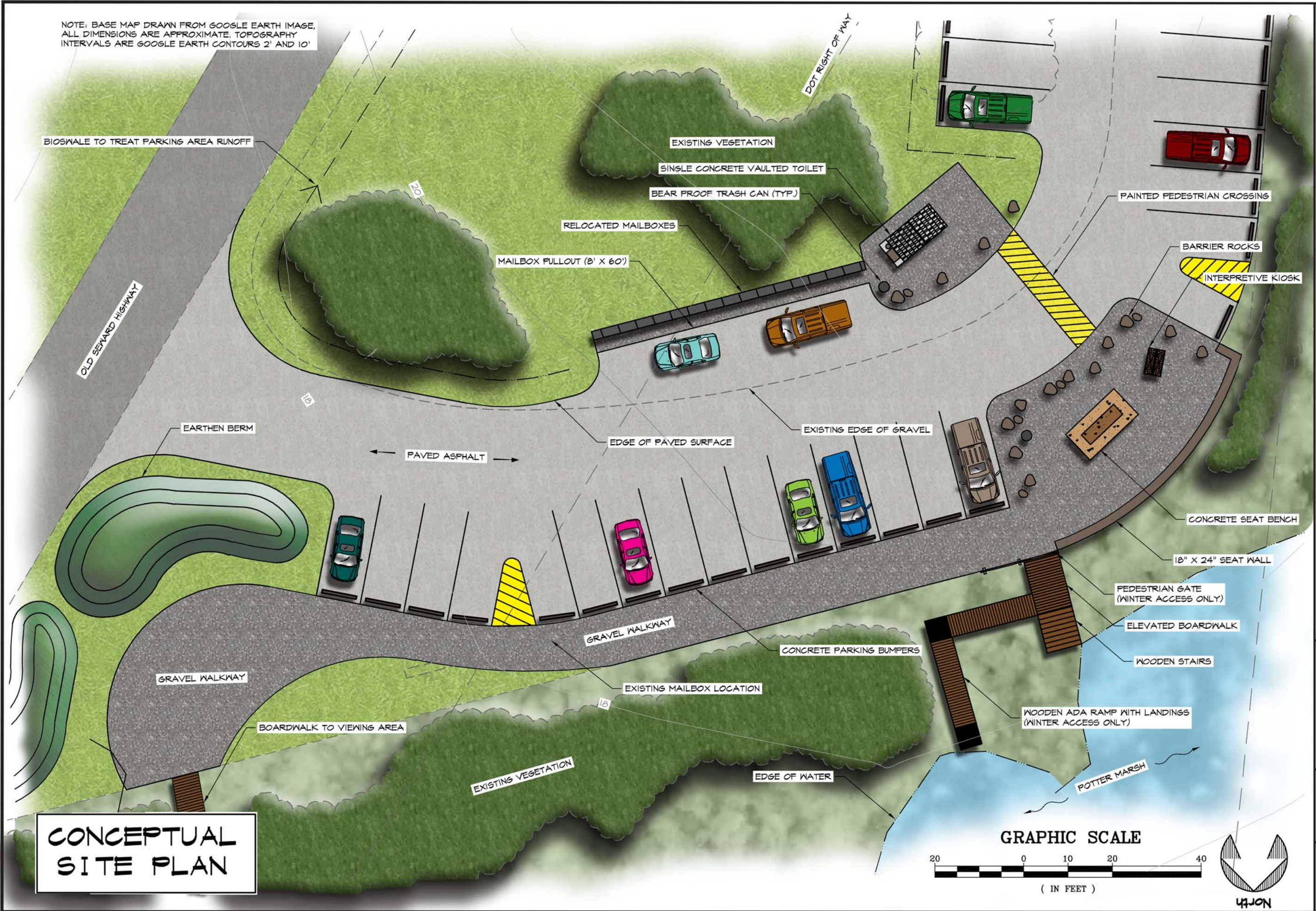
NOTE: BASE MAP DRAWN FROM GOOGLE EARTH IMAGE, ALL DIMENSIONS ARE APPROXIMATE. TOPOGRAPHY INTERVALS ARE GOOGLE EARTH CONTOURS 2' AND 10'



**CONCEPTUAL
SITE PLAN**



NOTE: BASE MAP DRAWN FROM GOOGLE EARTH IMAGE, ALL DIMENSIONS ARE APPROXIMATE. TOPOGRAPHY INTERVALS ARE GOOGLE EARTH CONTOURS 2' AND 10'



**CONCEPTUAL
SITE PLAN**

STATE OF ALASKA DEPARTMENT OF NATURAL RESOURCES



PREPARED: LEB
DRAWN: LEB
REVIEWED: LR
DATE: 06/06/2014

SHEET
5
OF 05 SHEETS

DOT PARKING AREA
CONCEPTUAL DETAIL

ACWR: POTTER MARSH
SITE IMPROVEMENTS
PROJECT NO. 74150-1