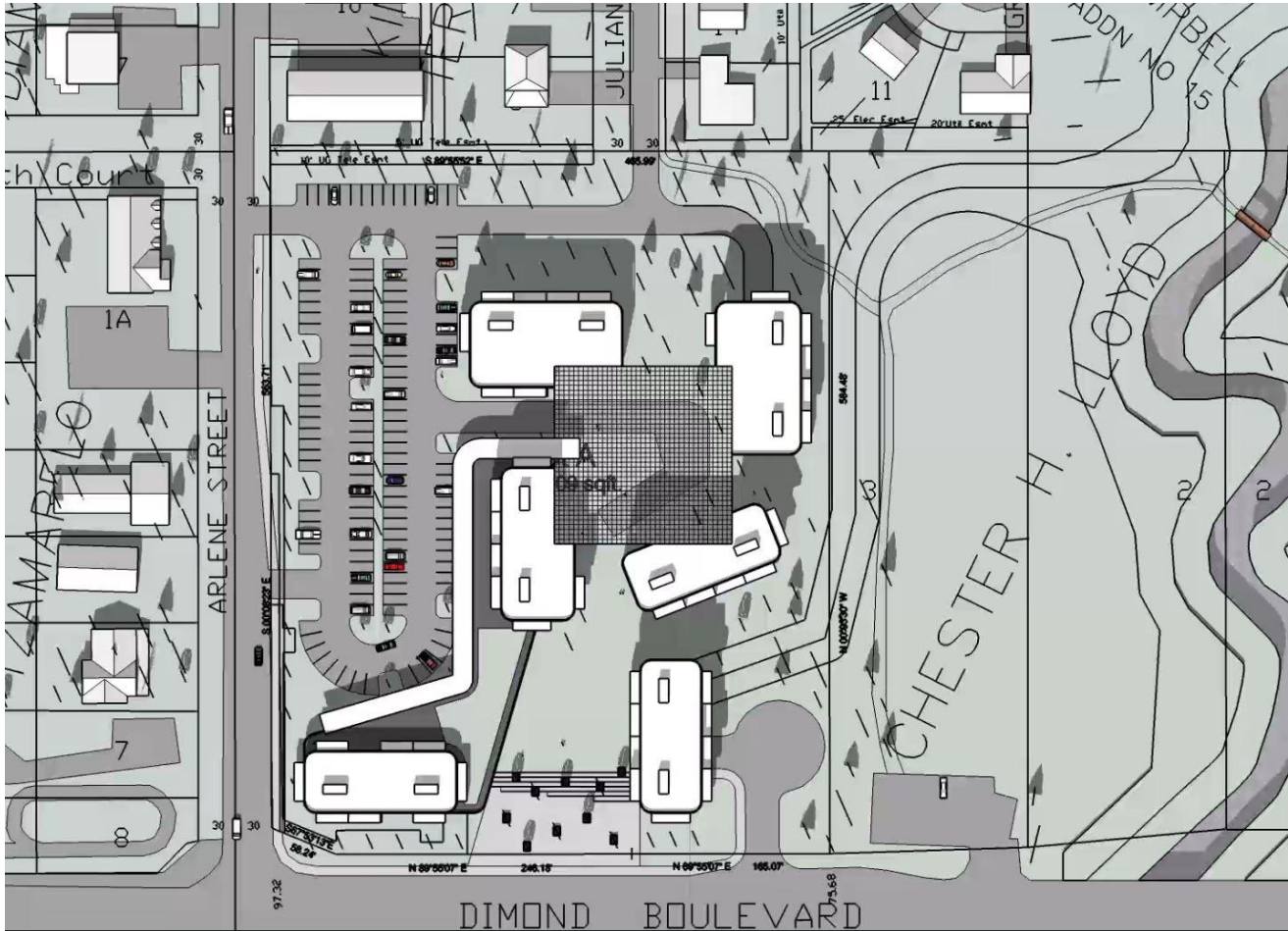


NO

To Rezoning Proposal No. 2018-0066

Emerald Subdivision, Tract 1

Corner of Arlene Street and Dimond Blvd.



Please come to the **Public Hearing** and show your support!

Loussac Library Monday, July 9, 2018 6:30 pm

The petitioner, Nord De la Chelsea, LLC wants to rezone from R-2M (Mixed Residential) to R-3A (Residential Mixed-Use). No site plan has been approved yet; however, drawings have been presented at the Sand Lake Community Council meeting. Project website: www.emeraldhillssubdivision.com

- 👉 Six buildings up to SEVEN stories high (70 ft)
- 👉 260 residential units
- 👉 Retail stores/ offices/ restaurant space

We need everyone to voice your concerns and help block this rezoning request.

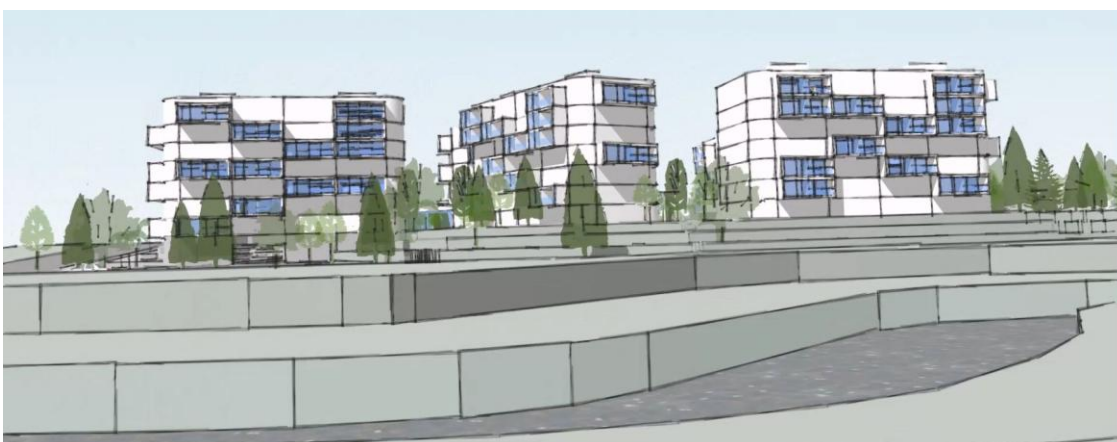
- ☞ Traffic on Arlene St and Dimond Blvd. will increase dramatically!
- ☞ Juliana St will be opened to through traffic!
- ☞ Dimond High and Chinook Elementary are already at or over capacity!
- ☞ Sledding Hill will be gone!
- ☞ Property value will decrease! Construction will take years!



View from Arlene St towards Dimond Blvd and Campbell Creek



View from Dimond Boulevard



View from Dimond Blvd Parking Lot (Campbell Park Parking)

No more sledding hill!